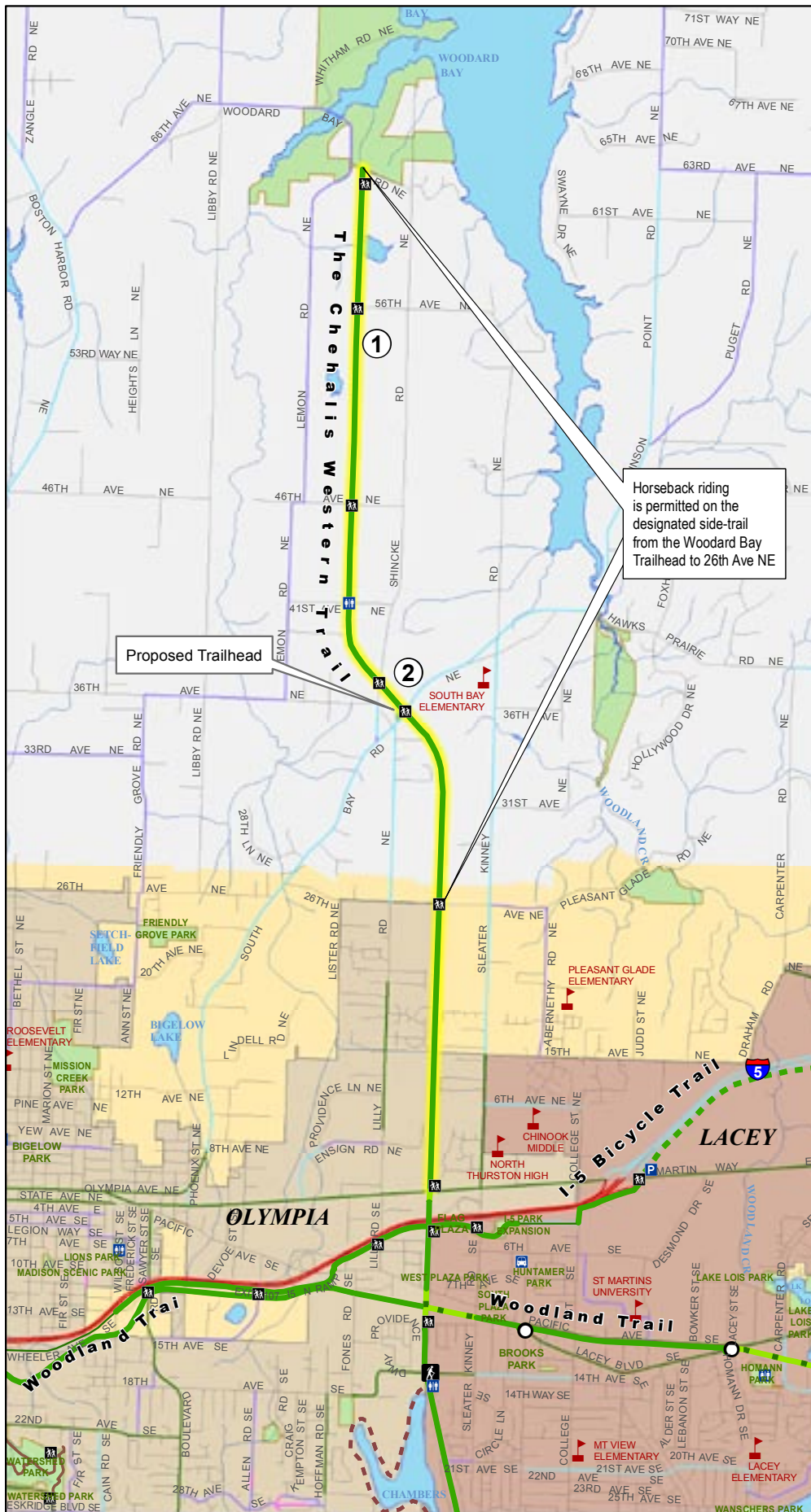


Chehalis Western Trail

(Washington State Department of Natural Resources)

1



- Trail, Shared Use, Existing
 - Trail, Shared Use, Planned
 - Trail, Shared Use, Proposed
 - Route, On Street, Planned
 - Route, On Street, Proposed
 - Trail, Recreation, Proposed
 - Featured Trail on Map
- Existing Bike Routes**
- Bike Lane
 - Wide Shoulder
- Commonly Used Local Roads**
- Commonly Used Local Roads
 - Bicycle/Pedestrian Connection
 - Bicycling Forbidden
 - Nature Trails
 - Local Streets
 - Roundabouts
 - Schools
 - Bus Transit Centers
 - Olympia Regional Airport
 - Park & Ride Lots
 - Public Restrooms
 - Trail Access Point
 - Trail Heads
 - Urban Growth Areas
 - Parks, Preserves, and Open Space
 - DNR Managed Lands
 - Unincorporated Thurston County



Disclaimer
This map is for general planning purposes only. Thurston Regional Planning Council makes no representations as to the accuracy or fitness of the information for a particular purpose.



The Chehalis Western Trail – Washington Department of Natural Resources

Length: 5.5 miles existing paved trail

Type of Facility: Shared-Use Trail

Lead Agency: Washington State Department of Natural Resources (DNR)

Partners: Thurston County, City of Lacey, and City of Olympia

Description: The portion of the Chehalis Western Trail (CWT) managed by the DNR was one of the first shared-use trails developed in Thurston County. This north-south 10-foot wide paved shared-use trail stretches from the Woodard Bay Preserve to Martin Way, passing through mature coniferous forest, semi-forested cattle pastures and suburban residential neighborhoods. This segment of the CWT is presently disconnected from the southern segment of the trail at Martin Way. The Bridging the Gap Project (see Map 2) aims to join these 2 corridors into one continuous north-south trail.



DNR's Chehalis Western Trail offers opportunities for hikers, bikers, and horseback riders. Photo by Stacey Brewster.

Connections and Destinations: Woodard Bay Preserve, Olympia and Lacey commercial centers

Cost Estimate: No additional facilities are currently planned for this trail at this time.

Conditions and Recommendations:

(Recommendations are in bold)

DNR has expressed an interest in transferring ownership and management of their segment of this trail to Thurston County. Single agency trail management would benefit trail users by providing more consistent trail features and amenities, reliable trail operations, and more predictable maintenance along the entire CWT corridor. Over time, the differences between the two segments would dissolve and the trail would function as a single facility. **Thurston County and DNR are reviewing the terms of a negotiation for this potential transaction. These negotiations should consider a plan for converting the existing gates on this trail to bollards, Thurston County's updated standard for trail access control devices, which will eventually be upgraded throughout the County Trail Network.**

- ① **Current and future trail managers should continue to permit equestrian use along this northern segment of the CWT from where it is currently permitted.**
- ② The parcel of DNR owned land at South Bay Rd could serve as a potential trailhead. This trailhead would ease current roadside parking management issues along the bend in South Bay road that intersects with the CWT. **The current or future trail manager should consider developing this potential trailhead with a kiosk, benches, bike racks and equestrian facilities such as horse trailer access, trailer parking, and hitching posts.**