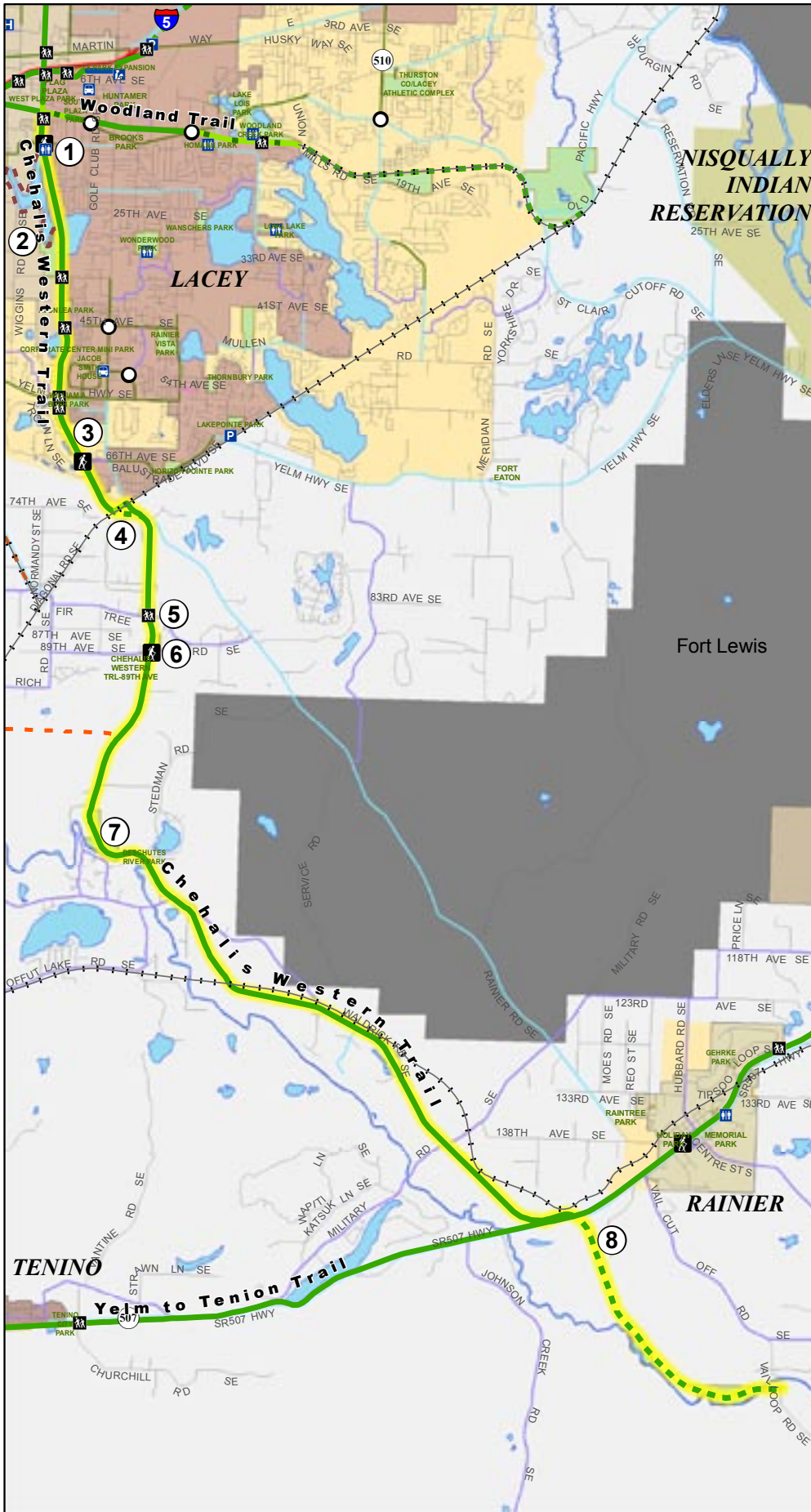


Chehalis Western Trail

(Thurston County)

3



- Trail, Shared Use, Existing
 - Trail, Shared Use, Planned
 - Trail, Shared Use, Proposed
 - Route, On Street, Existing
 - Trail, Recreation, Proposed
 - Potential, Shared Use
 - Featured Trail on Map
- Existing Bike Routes**
- Bike Lane
 - Wide Shoulder
 - Commonly Used Local Roads
 - Bicycle/Pedestrian Connection
 - Bicycles Forbidden
 - Active Railroad
 - Local Streets
 - Roundabouts
 - Bus Transit Centers
 - Hospitals
 - Libraries
 - Olympia Regional Airport
 - Park & Ride Lots
 - Public Restrooms
 - Trail Access Points
 - Trail Heads
 - Urban Growth Areas
 - Parks, Preserves, and Open Space
 - Unincorporated Thurston County
 - Department of Defense Lands

6 Miles

5

4

3

2

1

0.5

0

Disclaimer
 This map is for general planning purposes only. Thurston Regional Planning Council makes no representations as to the accuracy or fitness of the information for a particular purpose.



The Chehalis Western Trail – Thurston County

Length: 15 miles existing (paved), 3 miles proposed (undeveloped)

Type of Facility: Shared-Use Trail

Lead Agency: Thurston County

Partners: City of Lacey, City of Olympia, and Washington State Department of Transportation

Description: The Chehalis Western Trail (CWT) runs along the historic Weyerhaeuser Chehalis Western Railroad that operated from 1926 to the mid 1980's. This is the region's most popular trail and is also the longest trail corridor in the County. The County's premier north-south trail stretches a little over 22 miles from Woodard Bay on Puget Sound to the Vail Sorting Yard in the Bald Hills south of the City of Rainier. Fifteen miles of this corridor is developed with a 10 foot wide paved shared-use trail from 12th Avenue SE to the Yelm-Tenino Trail. Washington State Department of Natural Resources owns and manages the five and one half miles segment north of Martin Way (see Map 1). Thurston County is the lead agency for the Bridging the Gap Project that aims to connect the entire 22 miles of corridor (see map 2).

Connections and Destinations: Woodard Bay Preserve, Chambers Lake, Avonlea Park, William A. Bush Park, Indian Summer Golf and Country Club, Lacey and Olympia business districts, Providence St. Peter Hospital and surrounding clinics, public schools, Olympia and Lacey neighborhoods, I-5 Bicycle Trail, Woodland Trail, and Yelm-Tenino Trail

Cost Estimates: Various capital facility improvements and miscellaneous renovations are identified in the County's 2007-2012 Capital Facility Plan for the CWT totaling approximately \$1.05 million.

Conditions and Recommendations:

(Recommendations are in bold)

- ① The City of Olympia anticipates construction of on-street improvements including sidewalks and bike lanes on 14th Avenue will be completed by December 2007. These new facilities will improve non-motorized access to this urban trailhead and the CWT. **More collaboration between City of Olympia, City of Lacey and Thurston County is encouraged to provide non-motorized connectivity under the trestle on 14th Avenue.**
- ② Chamber's Lake Loop Trail – *The City of Olympia's Parks, Arts and Recreation Plan* (2002) includes a proposed three mile recreational trail around the western shore of Chamber's Lake. By itself, the loop would not be a regionally significant trail, but it could provide large numbers of neighboring residents access to the CWT. For this connection to be effective, a short east-west section of 27th Avenue/Wiggins Road (see Map 6) will require a bicycle or pedestrian facility to provide trail users safe direct access to the loop. The Chamber's Lake Loop Trail would provide CWT users another recreation opportunity in the vicinity of the Chamber's Lake Trailhead. This loop is part of the City's Open Space Network. The City has an easement on the north end of the lake, but additional easements or ROW is required to develop this proposed trail. The actual alignment of this trail has not yet been determined and may vary from what is represented on the

map. Part of this trail may course through wetlands and would be developed with low impact trail construction techniques. See Map 6 for a closer view of the proposed trail.

- ③ 67th Avenue Trailhead will be developed with minor amenities such as signage and benches. Limited parking is currently available.
- ④ Trail users must use an 800 foot gravel path that runs east-west along the Burlington Northern Santa Fe Railway Company (BNSF) mainline railroad berm. This path leads to the railroad trestle where trail users must pass under and then continue south on the wide shoulder along Rainier Road to reconnect with the CWT. Burlington Northern Santa Fe Railway Company owns 800-foot gravel path along the railroad berm. Thurston County has negotiated an agreement with BNSF to permit trail users to traverse this path. The County does not manage this path and does not have permission to provide improvements. **Should BNSF or future railroad companies require improvements to the trestle or section of this track, opportunities should be explored by Thurston County to formalize agreements to improve the existing detour, or consider a tunnel through the berm to connect with Thurston County's existing ROW opposite the BNSF Mainline.**
- ⑤ Fir Tree Road Trailhead - Two acres at this trailhead provide parking and access to the trail. Benches, signage, and miscellaneous renovations are anticipated for this site in 2011 (Thurston County CFP, 2007-2012).



Family Fun and Physical Activity: Thurston County's Chehalis Western Trail supports a variety of uses. Photo courtesy of Thurston County Parks and Recreation Department.

- ⑥ 89th Avenue Trailhead – Thurston County owns 20 acres at 89th Avenue and plans to develop this property into a major trailhead. The site will include a restroom, drinking fountain, picnic tables, garbage cans, parking stalls, and equestrian facilities to include horse trailer parking and hitching posts. Horseback riding is permitted on the CWT from 89th Avenue, south. Construction is anticipated in 2008-2009 and is estimated to cost \$800,000 (Thurston County CFP, 2007-2012).
- ⑦ Thurston County owns over 50 acres of undeveloped open space with nearly three quarter miles of Deschutes Riverfront access near Stedman Road and 103rd Avenue. Thurston County Parks is holding this property for future development. The County will consider how this property will interface with the CWT and consider trail appropriate amenities.
- ⑧ Thurston County owns approximately three miles of undeveloped trail corridor south of the Yelm-Tenino Trail. This trail may be developed in the future as funding and County capital facility development priorities are established. The County anticipates future development of a three acre trailhead at Vail Loop Road and it is estimated to cost approximately \$250,000 (Thurston County CFP, 2007-2012). The County also owns over 50 acres of undeveloped property for future development along this proposed trail spur. This future park would be the southernmost trailhead of the CWT. The County has no timeline or funds secured for this proposed trail segment.