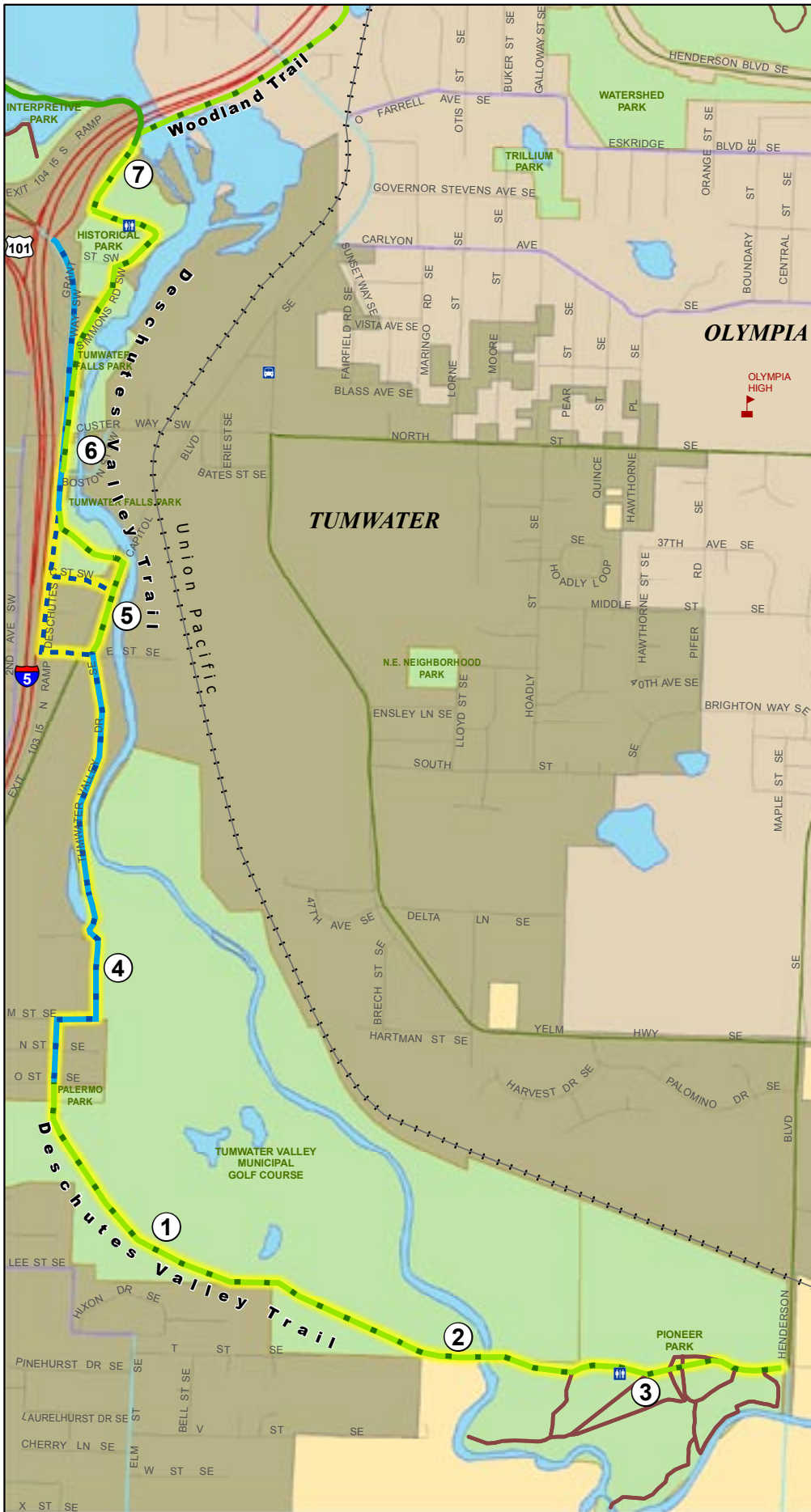
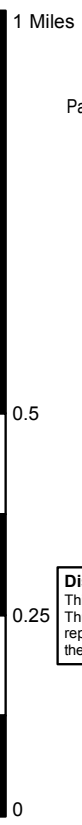


# Deschutes Valley Trail

9



- Trail, Shared Use, Existing —
- Trail, Shared Use, Planned —
- Route, On Street, Planned —
- Route, On Street, Proposed - -
- Trail, Recreational, Existing —
- Featured Trail on Map** —
- Existing Bike Routes**
- Bike Lane —
- Wide Shoulder —
- Commonly Used Local Roads —
- Bicycle/Pedestrian Connection —
- Bicycles Forbidden —
- Active Railroad - + - +
- Local Streets —
- Schools
- Bus Transit Centers
- Public Restrooms
- Urban Growth Areas
- Parks, Preserves, and Open Space
- Unincorporated Thurston County



**Disclaimer**  
 This map is for general planning purposes only. Thurston Regional Planning Council makes no representations as to the accuracy or fitness of the information for a particular purpose.



## Deschutes Valley Trail

**Length:** 3 miles

**Type of Facilities:** Shared-Use Trail and On-Street Facilities

**Project Lead:** City of Tumwater

**Project Partners:** Olympia Tumwater Foundation, Woodland Trail Greenway Association, City of Olympia, Washington State Department of General Administration, Washington State Department of Transportation, Washington Department of Fish and Wildlife

**Description:** The Deschutes Valley Trail will serve as Tumwater’s primary connection to the Regional Trail Network. It will connect to multiple recreational, historical, and other geographical destinations. The trail spans north-south through the center of Tumwater in the Deschutes River Valley providing residents valued recreational and transportation opportunities. Trail users could follow the flow of Deschutes River from Henderson Boulevard to the Tumwater Falls, Capitol Lake, and the Puget Sound via this regionally significant trail corridor.

**Cost Estimates:** \$600,000 for Phase 1. No additional cost estimates are available.

**Connections and Destinations:** Pioneer Park, Tumwater Valley Municipal Golf Course, Palermo Pocket Park, Valley Athletic Club, Tumwater Falls Park, Tumwater Historic Park, Historic Tumwater Brewhouse, Capitol Lake Interpretive Center, Deschutes Parkway, Marathon Park, Heritage Park, the future West Bay Park and Trail, Woodland Trail, the proposed Percival Canyon Trail, Deschutes River, Capitol Lake, Budd Inlet, and downtown Olympia.

### Policy Considerations:

The *Shoreline Master Program for the Thurston Region, Section 9, Deschutes River Special Area Management Plan* (SAMP) includes policies and a preferred vision that currently precludes multi-use trail development and activities along portions of the City’s preferred alignment for the Deschutes Valley Trail. At such time as the City updates its Shoreline Master Program, it will be possible to reevaluate the recreational, wellness promotion, and non-motorized transportation benefits this multi-use trail could provide Tumwater residents and other trail users.

### Conditions and Recommendations:

*(Recommendations are in bold)*

- ① Tumwater Municipal Golf Course Pro Golf Shop to East T Street - Phase 1: The City of Tumwater has secured a \$308,601 Regional Surface Transportation Program Grant from TRPC that is matched with \$288,399 in local funds, and a \$3,000 match and 100 hours of volunteer labor from the Woodland Greenway Trail Association (\$600,000 total) to design and construct Phase 1. This phase would provide an on-street pathway from the Tumwater Valley Pro Golf Shop south through Palermo Avenue to Palermo Park. From Palermo Park to the end of East T Street, a 12’ wide paved shared-use trail would follow the southern boundary of city property through the Tumwater Valley Golf Course. **The trail would meander around the tree line,**

**but additional safety measures should be considered that would prevent rare, but potential flying golf ball incidents.** A connection from the trail to T Street would provide residential access to the trail. Phase 1 construction is scheduled to begin in 2008 and be completed by 2009. The remaining segments of this trail are unfunded and require additional planning and design.

- ② Deschutes River Crossing at Pioneer Park - Washington State Department of Fish and Wildlife (WDFW) plans to construct a fish hatchery at Pioneer Park. WDFW has indicated a willingness to explore the feasibility of constructing a bicycle and pedestrian bridge across the Deschutes River, and is negotiating with City of Tumwater to utilize this bridge as part of the trail to connect to Pioneer Park. Opportunities to foster environmental awareness through riparian fish and wildlife interpretation are also being evaluated near the future fish hatchery site.
- ③ Pioneer Park - The trail would continue east across the Deschutes River and connect with existing nature trails in Tumwater's Pioneer Park. Pioneer Park's existing amenities make this park a suitable trailhead. **A kiosk and wayfinding signage should be provided to orient users to the trail.**
- ④ Tumwater Municipal Golf Course - From the Tumwater Pro Golf Shop, trail users could proceed north on future on-street bicycle and pedestrian facilities on Tumwater Valley Drive to E Street. A narrow paved pedestrian path currently exists, but would require upgrading to current City of Tumwater street standards to provide sufficient capacity for trail users.
- ⑤ E Street to Tumwater Falls Park - From E Street, a paved shared-use trail would nestle between Capitol Boulevard and the Deschutes River and enter Tumwater Falls Park under the Capitol Boulevard Bridge. **Planning and coordination between the Olympia Tumwater Foundation and the City of Tumwater would be required. An easement, defining acceptable levels of trail use, and discussions of safety and security concerns are issues for Tumwater Fall's Park.** An alternative approach or detour could be provided via on-street routes at E Street and C Street with marked street crossings or pedestrian refuge islands. A non-motorized facility along Deschutes Parkway could be an alternative to using the river bank and entering Tumwater Falls Park.

- ⑥ Tumwater Falls Park to Tumwater Historic Park - The trail would resume as a shared-use trail north of the Boston Street Bridge from Tumwater Falls Park. Future sidewalk and bike lanes would provide connectivity between the park exit and the trail. The trail would proceed north to Tumwater Historic Park and enter the park via Simmons Road. The City is evaluating design options for reconfiguring non-motorized access through the park entrance on Simmons.
- ⑦ Tumwater Historic Park - More work is needed to determine the final alignment through Tumwater Historic Park. **Consideration among the project partners should be given for evaluating the trail connecting to the Historic Brewhouse, the Woodland Trail, and the State Capitol Lake Interpretive Center Trail.**