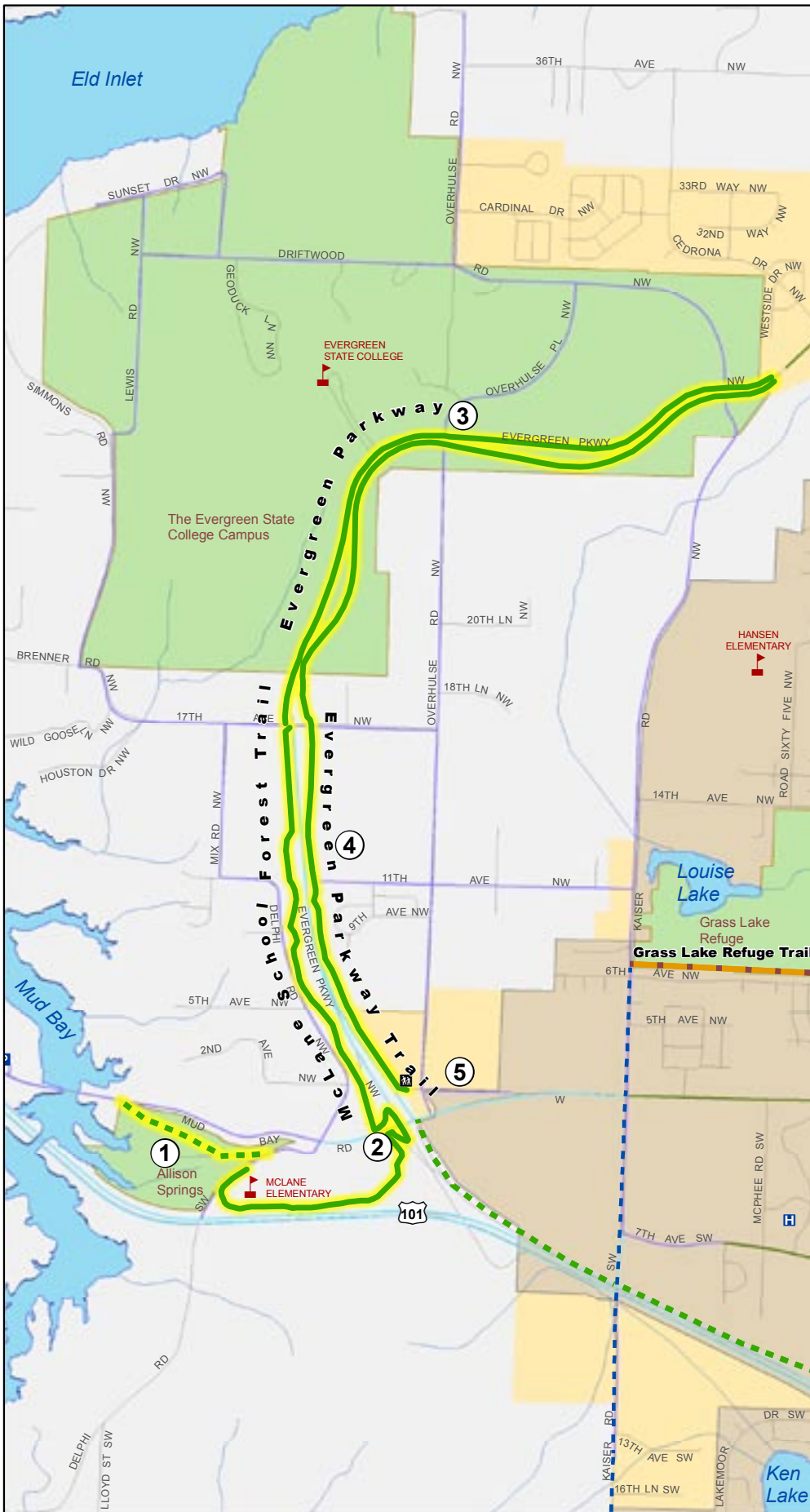


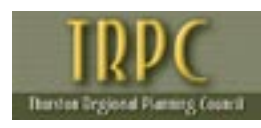
McLane School Forest Trail and Evergreen Parkway

12



- Trail, Shared Use, Existing
 - Trail, Shared Use, Proposed
 - Route, On Street, Proposed
 - Trail, Recreation, Planned
 - Featured Trail on Map
- Existing Bike Routes**
- Bike Lane
 - Wide Shoulder
 - Commonly Used Local Roads
 - Bicycle/Pedestrian Connection
 - Bicycles Forbidden
 - Local Streets
 - Schools
 - Hospitals
 - Park & Ride Lots
 - Trail Access Point
 - Urban Growth Areas
 - Parks, Preserves, and Open Space
 - Department of Defense Lands
 - Unincorporated Thurston County

Disclaimer
 This map is for general planning purposes only. Thurston Regional Planning Council makes no representations as to the accuracy or fitness of the information for a particular purpose.



McLane School Forest Trail and Evergreen Parkway Bicycle Paths

McLane School Forest Trail Length: 1.9 miles existing and 0.5 miles proposed

Evergreen Parkway Bicycle Path Length: 4.25 miles

Type of Facility: Existing Shared-Use Trail and Bike Paths

Partners: Thurston County, The Evergreen State College, McLane Forest/School Trails Committee, Olympia School District, Washington State Department of Transportation

Description: The McLane School Forest Trail, the original Evergreen Parkway bike path and the Evergreen Parkway through the Evergreen State College Campus provide residents of northwest Olympia and unincorporated Thurston County access to nearly seven miles of shared-use trail or bike paths. The McLane Trail was the vision of former Secretary of State Ralph Munro and the McLane School Forest Committee. McLane Elementary School students and community volunteers have planted hundreds of trees and daffodils along the southwest corner of the Evergreen Parkway and a trail now showcases the fruits of their labor. This forested trail includes wildlife ponds, woodlands, and a jersey barrier separated crossing along the Evergreen Parkway Bridge to travel across Harrison Avenue/Mud Bay Road.



McLane Elementary School students participate in the ribbon cutting ceremony of the McLane School Forest Trail, January 2006. Photo courtesy of Washington State Department of Transportation.

Cost Estimates: Most of these facilities are complete. Cost estimates for the proposed McLane School Forest Trail extensions are unknown and require a feasibility study or design and engineering.

Connections and Destinations: The Evergreen State College, McLane Forest and Elementary School, numerous northwest Olympia and unincorporated Thurston County neighborhoods.

Conditions and Recommendations:

(Recommendations are in bold)

- ① Proposed McLane School Forest Trail extension, Allison Springs - The McLane School Forest Trail Committee has proposed an extension of the trail through the Allison Springs wellhead protection area. **The City of Olympia should conduct a feasibility study to evaluate the opportunities for a trail through this environmentally sensitive area.** This segment would extend the McLane Trail from the school driveway, through Allison Springs to Mud Bay Road. The McLane trail is a significant link in the proposed Capitol to Capitol Trail Route (see Map 11).

- ② McLane Elementary School Driveway to the Evergreen State College Campus - This segment of trail is paved and is open for public use. This trail provides seamless non-motorized connectivity between The Evergreen Parkway and Mud Bay Road. Community volunteers and McLane Elementary School students planted thousands of shrubs, trees, and plants along this corridor. The frequency of benches and the varying landscapes make this make this relatively short trail a perfect destination for a stroll any day of the week. Limited parking is available along 17th Avenue and near McLane Elementary School.
- ③ Evergreen Parkway, Kaiser Road to southern limits of The Evergreen State College Campus - In 2005, the Evergreen State College completed construction on its Evergreen Parkway Modernization Project. A single travel lane was removed from each side of the parkway and converted into planter strips and a combined bicycle and pedestrian path. Although these facilities aren't suitable for the same variety of multi-use trail activities supported by shared-use trails like in-line skating and horseback riding, they are landscaped and are suitable for walking, running, bicycling, and pushing strollers. These facilities extend the usefulness of this corridor. The modernization project successfully increased the recreation and transportation options for this corridor's neighboring residents and non-motorized users. In 2006, The Evergreen State College completed the construction of a non-motorized refuge crossing at the southern entrance to its campus.
- ④ Evergreen Parkway, southern limits of The Evergreen State College Campus to 2nd Avenue NW - The aging shared-use path along the East side of the Evergreen Parkway is in need of maintenance. This trail is over 20 years old; is buckled and cracked from tree roots; and the trail's edge is deteriorating from encroaching vegetation. **Thurston County should assess the condition of this trail and determine what improvements are required to increase its usefulness. In addition, Thurston County should partner with The Evergreen State College to link this trail into the new Evergreen Parkway bicycle paths.**
- ⑤ Harrison Avenue – 2nd Avenue NW Non-Motorized Connection – City of Olympia plans to upgrade Harrison Avenue with bicycle lanes and sidewalks. **The City should evaluate options for connecting future on-street facilities with 2nd Avenue to improve the non-motorized connection to the older Evergreen Parkway Trail.**



Former Secretary of State Ralph Munro enjoys a stroll along the freshly paved McLane School Forest Trail. Photo courtesy of Washington State Department of Transportation.