

DISCLAIMER:
This map is for general planning purposes only. Thurston Regional Planning Council makes no representations as to the accuracy or fitness of the information for a particular purpose.

THURSTON COUNTY

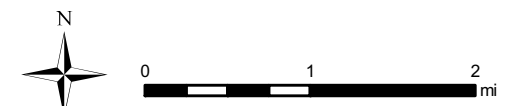
2007 PM PEAK HOUR TRAFFIC VOLUMES Lacey-Olympia-Tumwater Urban Area

Key to reading traffic volumes

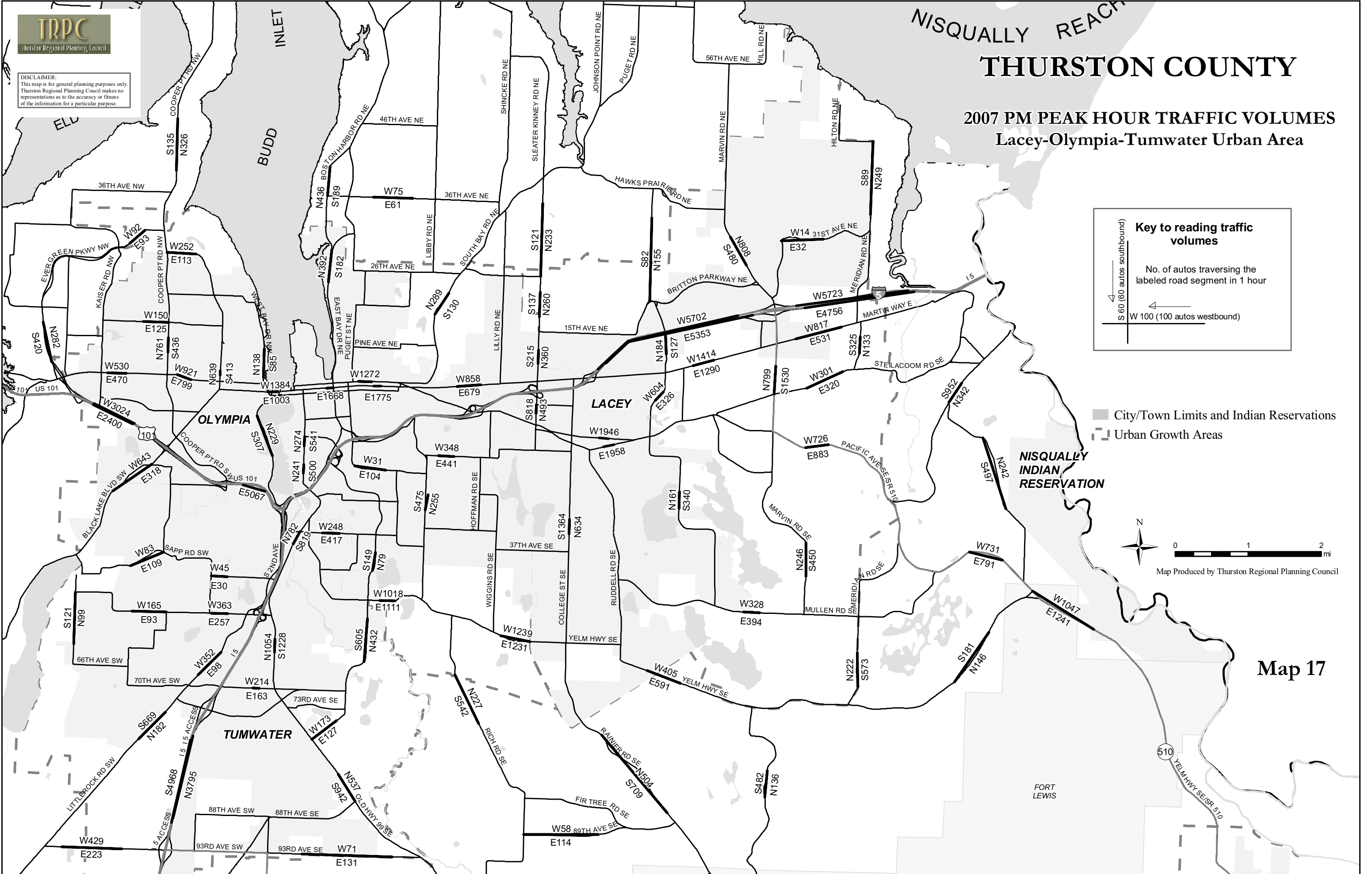
No. of autos traversing the labeled road segment in 1 hour

↓ S 60 (60 autos southbound)
← W 100 (100 autos westbound)

■ City/Town Limits and Indian Reservations
▤ Urban Growth Areas



Map Produced by Thurston Regional Planning Council



Map 17