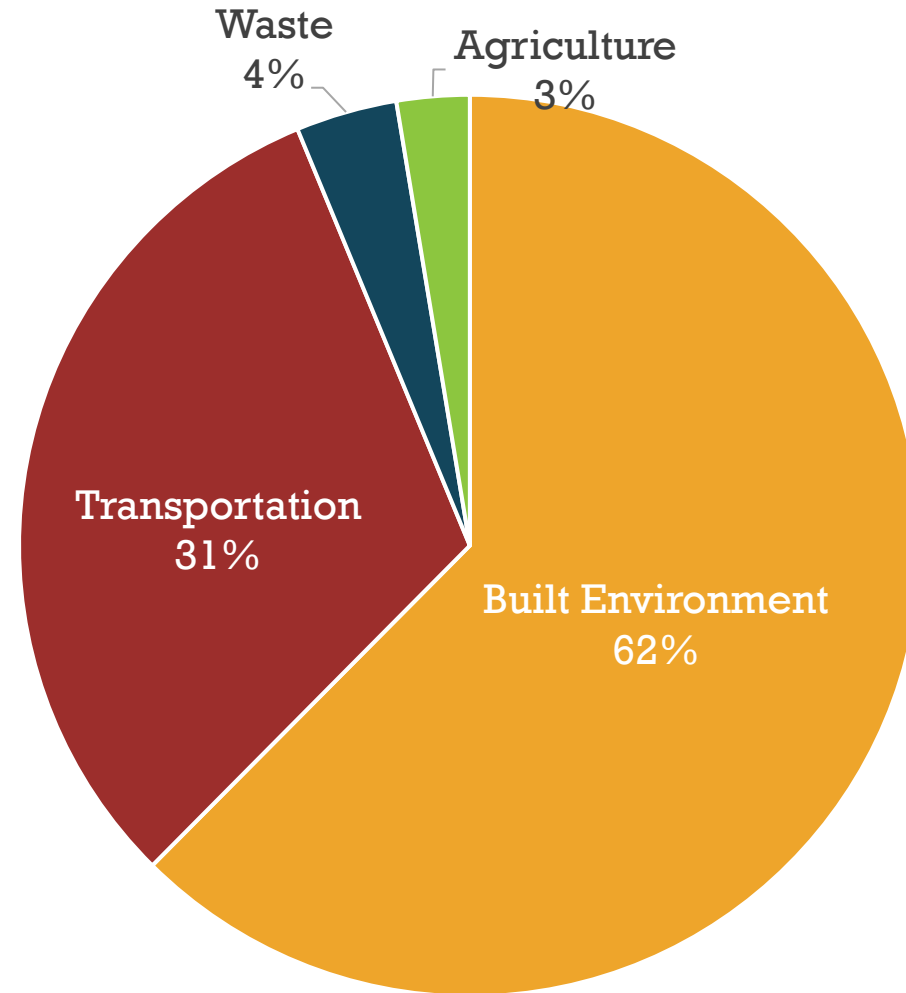


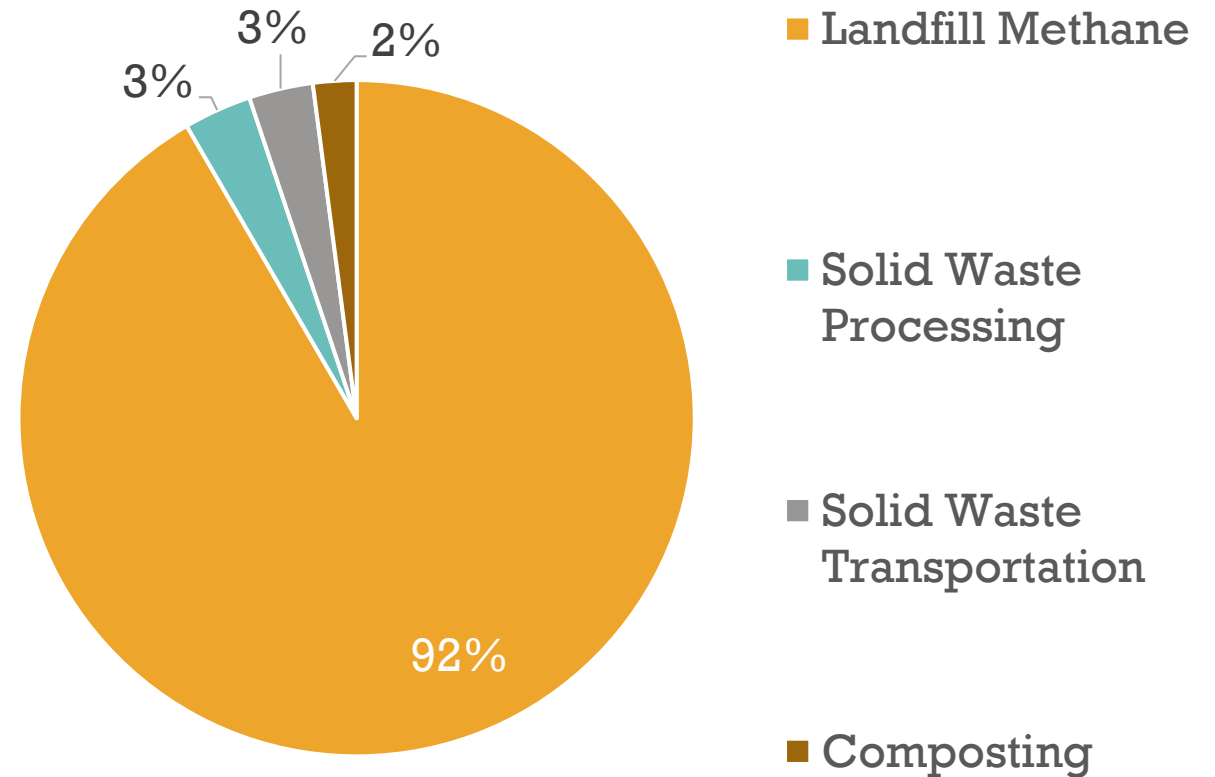
## Solid Waste Overview

# Overall Emissions



- **Source:** Greenhouse Gas Inventory Report for Calendar Years 2015-2019, Thurston Climate Action Team (December 2021)

2019 Emissions  
Solid Waste =  
102,000 tCO<sub>2</sub>e



- **Source:** Greenhouse Gas Inventory Report for Calendar Years 2015-2019, Thurston Climate Action Team (December 2021)

# Solid Waste - Strategies & Actions & Targets

## **W4. Divert more solid waste from landfills.**

- Waste audits and education for businesses
- Waste less food program

## **W6. Reduce consumption of carbon-intensive goods and services.**

- Technical assistance to business on reducing carbon-intensity of supply chains

### **Target**

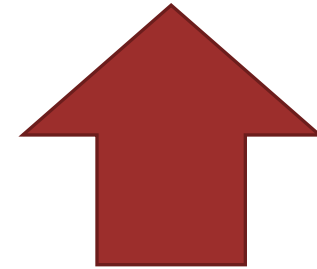
- Reduce solid waste generated per capita by 10% by 2030 and 30% by 2050.
  - Uses 2015 as baseline

2021 Progress Report

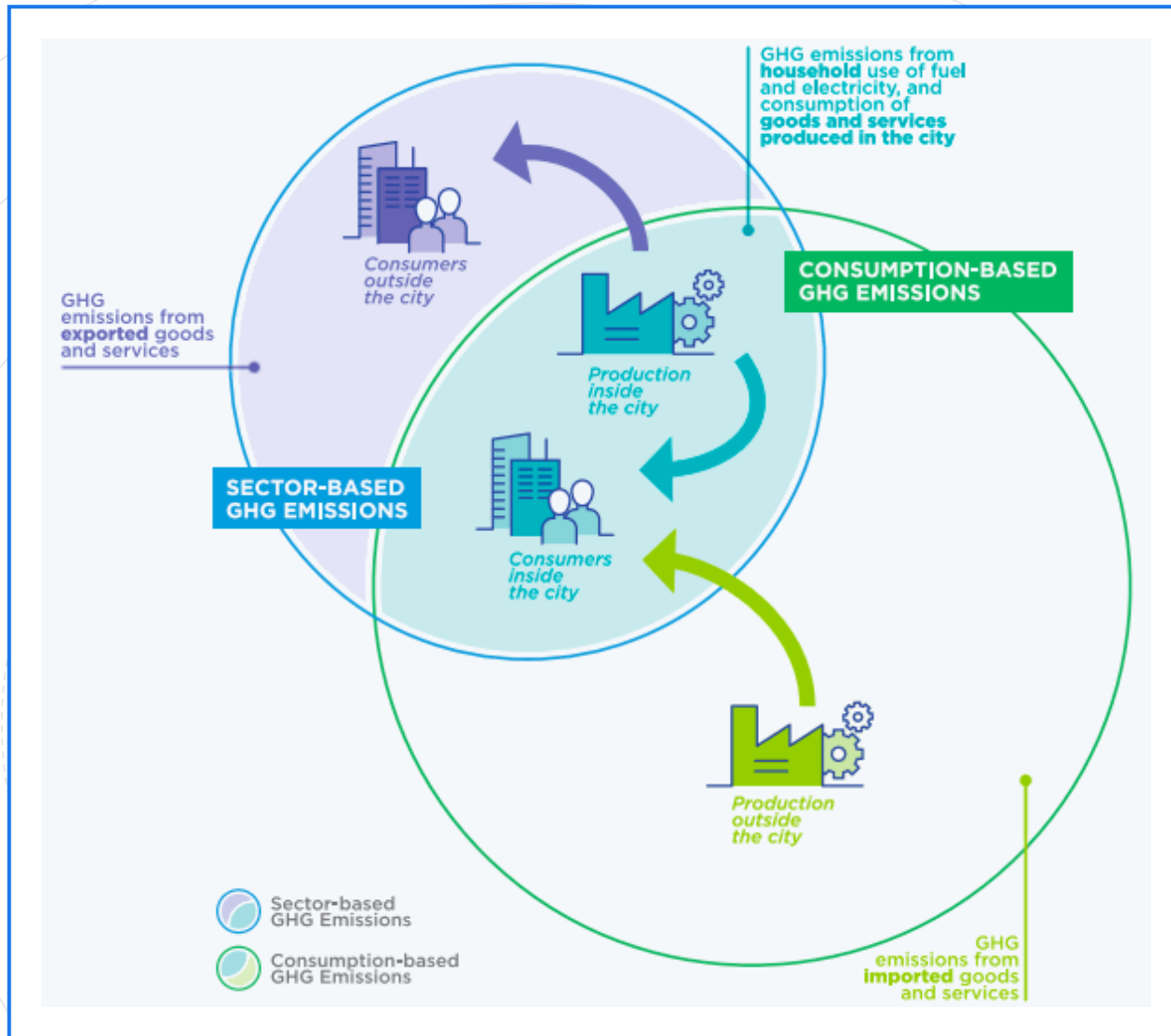
Waste

## Landfill Waste

Landfill Solid Waste, per Capita, 2015-2020



+12%



## Consumption-based Emissions (Action G4.3)

- Includes emissions from all activities in a region, regardless of where they are emitted
- Cool Climate Tool (UC Berkeley)
- Rough estimate for Thurston County = 5.6 million tons CO<sub>2</sub>e