

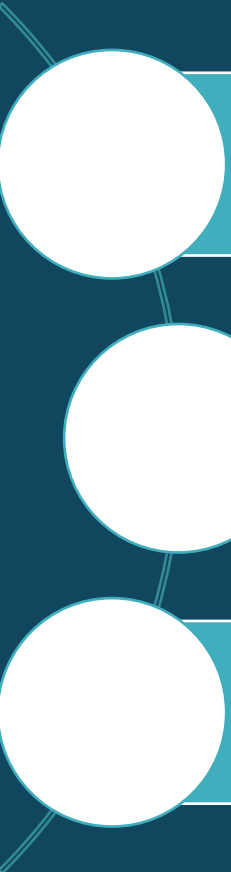
# SFY 2024

# Unified Planning Work Program

Thurston Regional Planning Council  
May 5, 2023



# What is the UPWP?



Describes how TRPC conducts its regional transportation work program

Must meet federal and state requirements

Covers a major portion of TRPC's budget

# Thurston Region Transportation Planning Work Program

TRPC Transportation Work Program

Surface Transportation Program Federal Planning Studies

Planning Activities of Other Agencies

Unfunded Needs

# Work Program

1. Program Management

2. Project Programming & Tracking

3. Ongoing Planning & Outreach

4. Data Collection, Analysis, & Forecasting

5. Major Initiatives

6. Contingency and Carryover

# Key Ongoing Planning Elements

## Climate Mitigation Plan Implementation

- Continued support for implementing the Climate Mitigation Plan

## General Planning Activities

- Multimodal and demand management, safety and security, land use and transportation integrated planning, equity integration, I-5 Planning Projects, regional plans, emerging technologies

## Urban Areas and Functional Classification Review

- 10-year review of urbanized area boundaries

# Major Initiatives



Continue  
Electric and  
Alternative Fuel  
Vehicles  
Planning



Continue  
update of  
Population and  
Employment  
Forecast



Continue  
update of the  
Regional Travel  
Demand Model



Complete  
update of the  
Regional Trails  
Plan

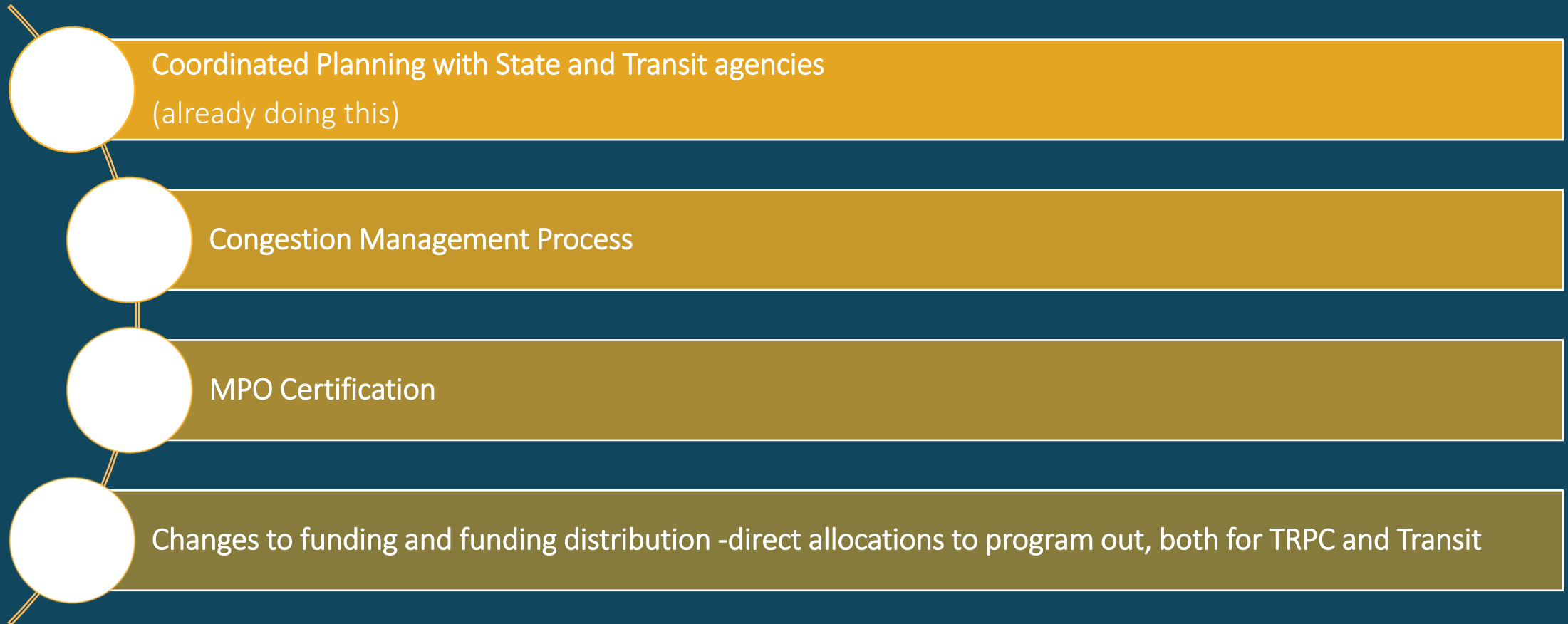


Begin update  
of the Regional  
Transportation  
Plan



TMA Transition

# Becoming a Transportation Management Area (TMA)



# Unfunded Needs



## High Capacity Transportation – Next Steps

Phase I: \$200k  
Phase II: \$250k  
Phase III: TBD



## Regional Freight Strategy

\$988 k



## Regional Multimodal Level of Service

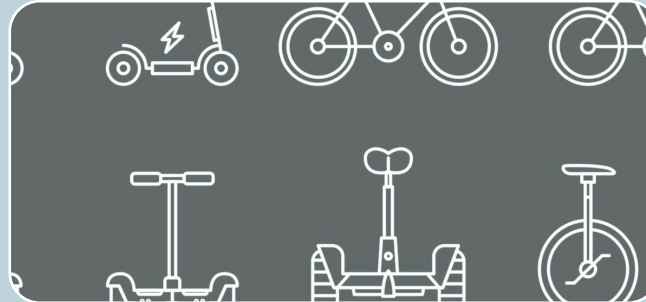
\$250 k

# Unfunded Needs



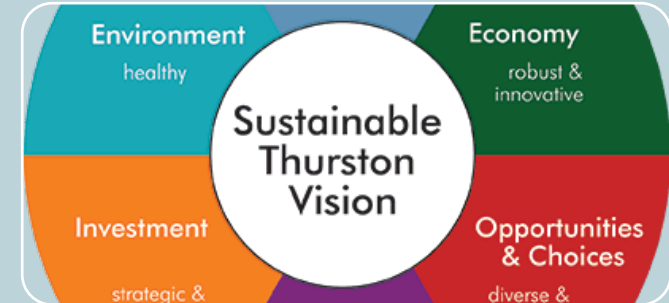
Transportation Resiliency Strategy

\$250-300 k



Countywide Bicycle and Micromobility Strategy

\$350-500 k



Neighborhood Centers Study

\$150 k

# Unfunded Needs



Regional Transportation  
Safety Action Plan

\$500 k