

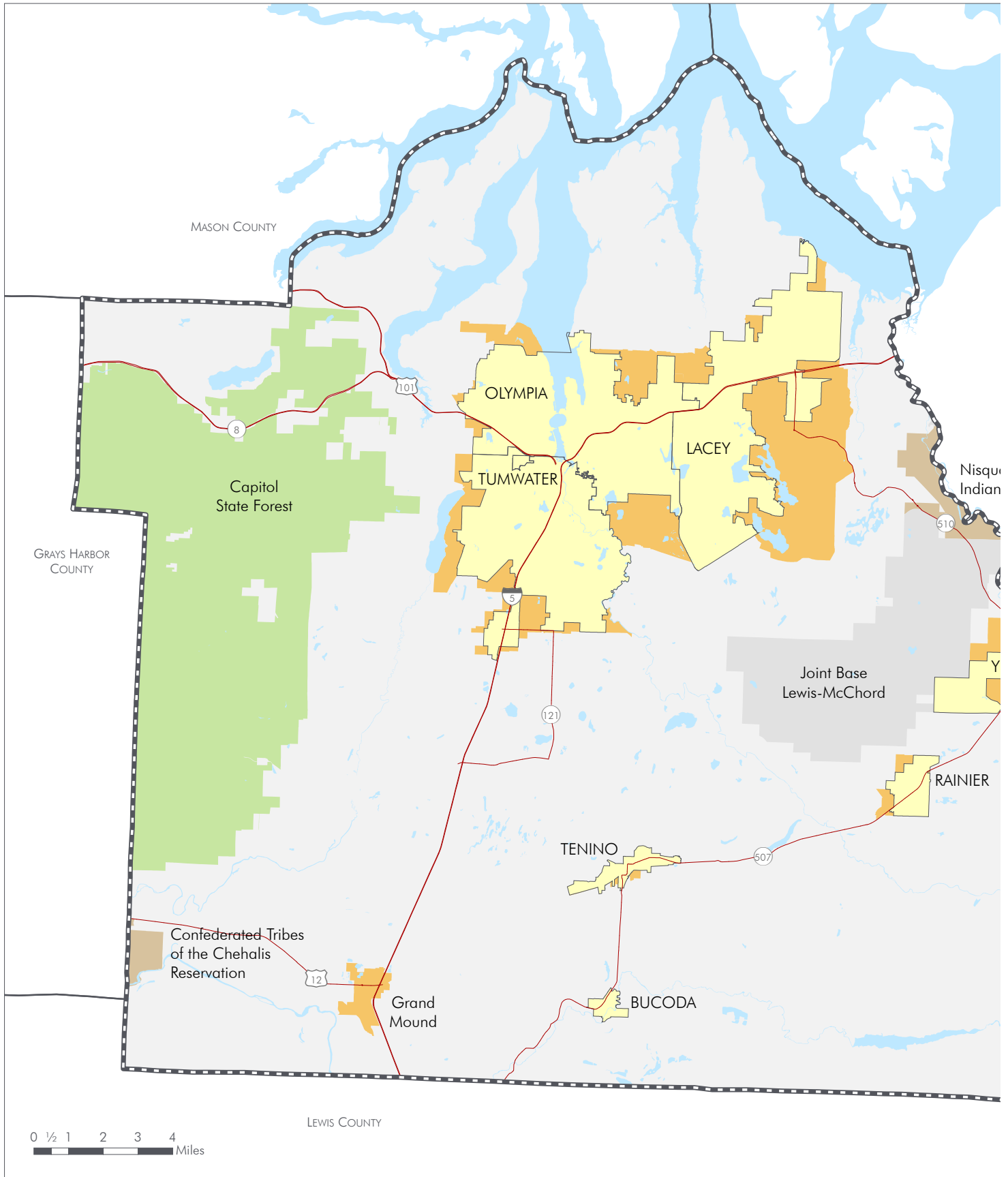
# Appendix B

## Inventory of Facilities

Appendix B identifies major transportation facilities in the Thurston region that function as an integrated system. This is a big-picture view of major roadways, transit, multimodal and intermodal facilities, pedestrian and bicycle facilities, marine port and airport, and railroads. It provides information on the physical, operational, and usage characteristics of the regional transportation system.

This information is provided through maps, including:


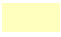




- B-1: Cities, Towns, Reservations, and Public Lands
- B-2: Centerline Miles of Paved Roads
- B-3: Transit Service Area and Routes
- B-4: Intermodal and Multimodal Travel Facilities
- B-5: On- and Off-Street Bicycle and Pedestrian Facilities
- B-6: Sidewalks
- B-7: Freight Corridors
- B-8: National Highway System Routes
- B-9: Federal Functional Classification for Routes

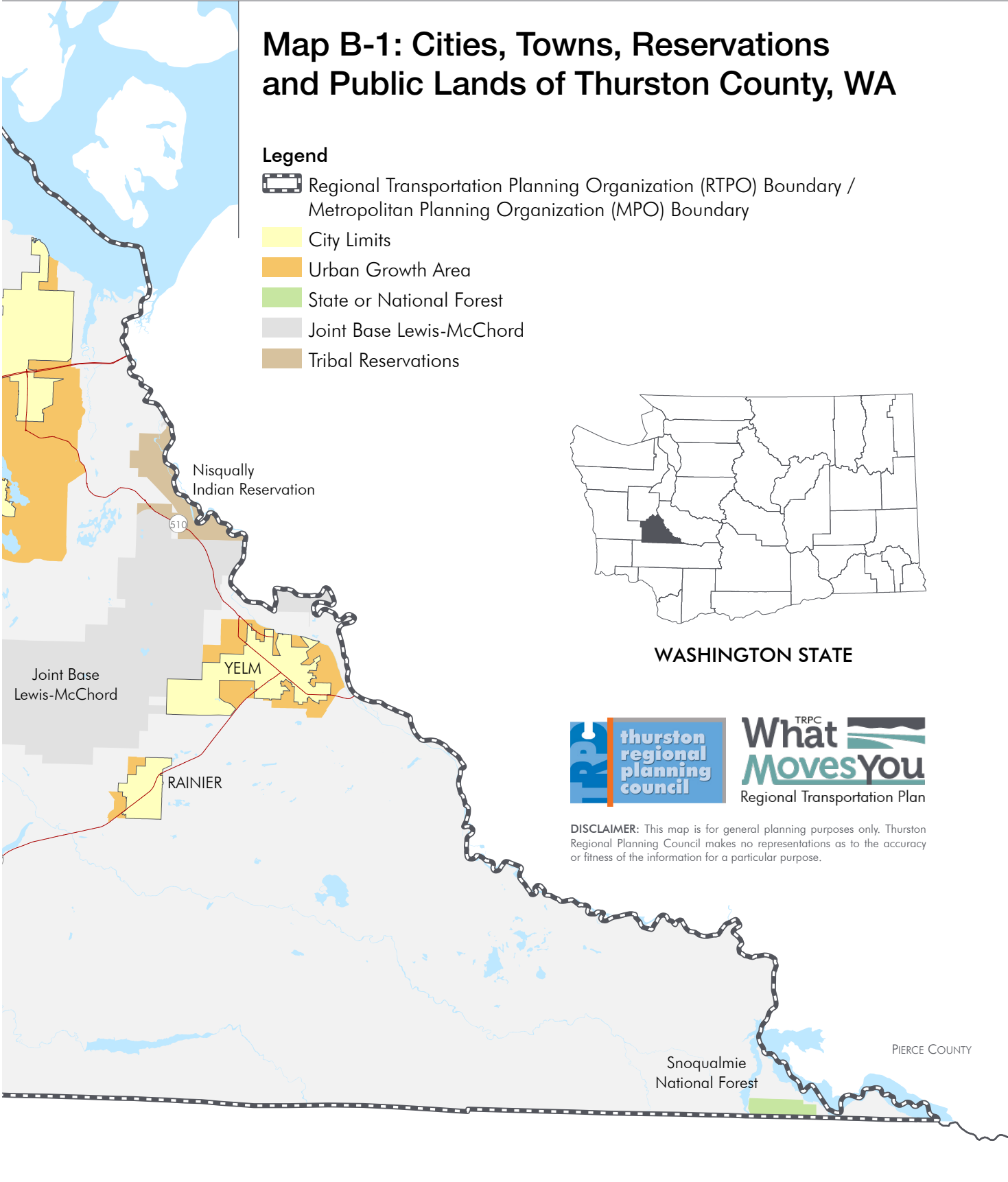


Document Path: P:\Transportation\RTP2050\RTP\_Maps.aprx

# Map B-1: Cities, Towns, Reservations and Public Lands of Thurston County, WA

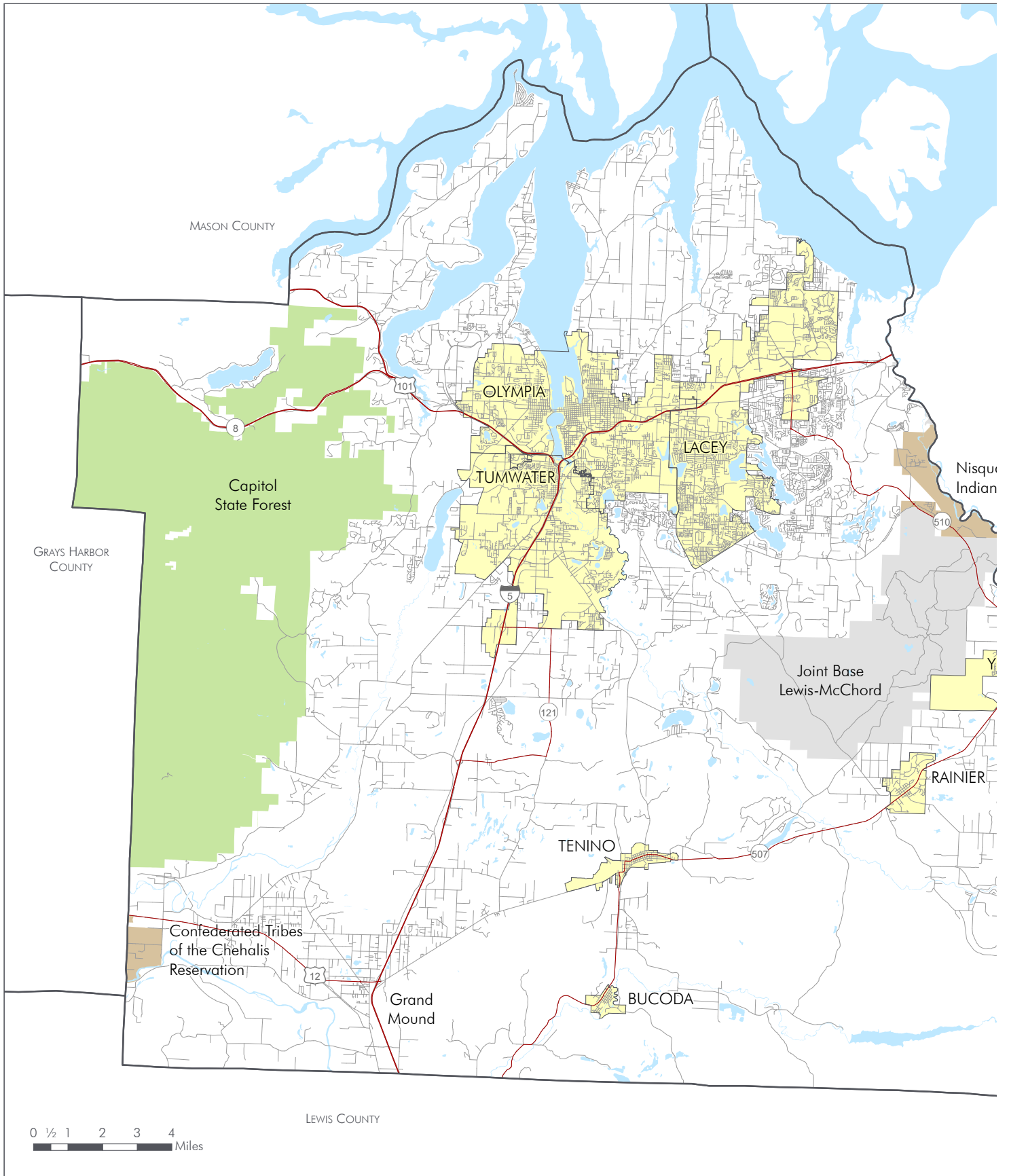
### Legend

-  Regional Transportation Planning Organization (RTPO) Boundary / Metropolitan Planning Organization (MPO) Boundary
-  City Limits
-  Urban Growth Area
-  State or National Forest
-  Joint Base Lewis-McChord
-  Tribal Reservations



**DISCLAIMER:** This map is for general planning purposes only. Thurston Regional Planning Council makes no representations as to the accuracy or fitness of the information for a particular purpose.

Date: 3/12/2025



Document Path: P:\Transportation\RTP2050\RTP\_Maps.aprx

# Map B-2: Centerline Miles of Paved Roads in Thurston County, WA

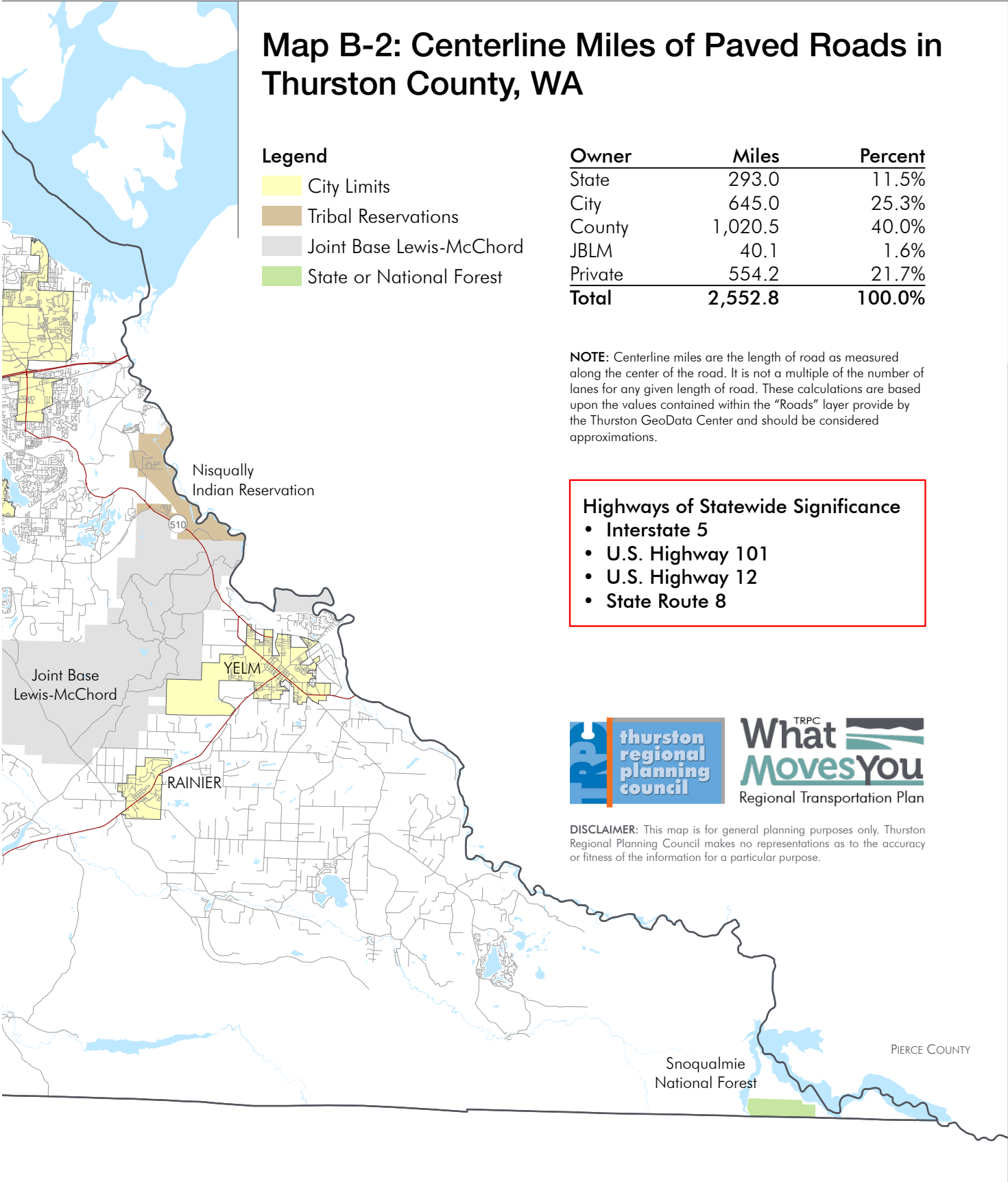
**Legend**

- City Limits
- Tribal Reservations
- Joint Base Lewis-McChord
- State or National Forest

Owner	Miles	Percent
State	293.0	11.5%
City	645.0	25.3%
County	1,020.5	40.0%
JBLM	40.1	1.6%
Private	554.2	21.7%
<b>Total</b>	<b>2,552.8</b>	<b>100.0%</b>

**NOTE:** Centerline miles are the length of road as measured along the center of the road. It is not a multiple of the number of lanes for any given length of road. These calculations are based upon the values contained within the "Roads" layer provide by the Thurston GeoData Center and should be considered approximations.

- Highways of Statewide Significance**
- Interstate 5
  - U.S. Highway 101
  - U.S. Highway 12
  - State Route 8



thurston  
regional  
planning  
council

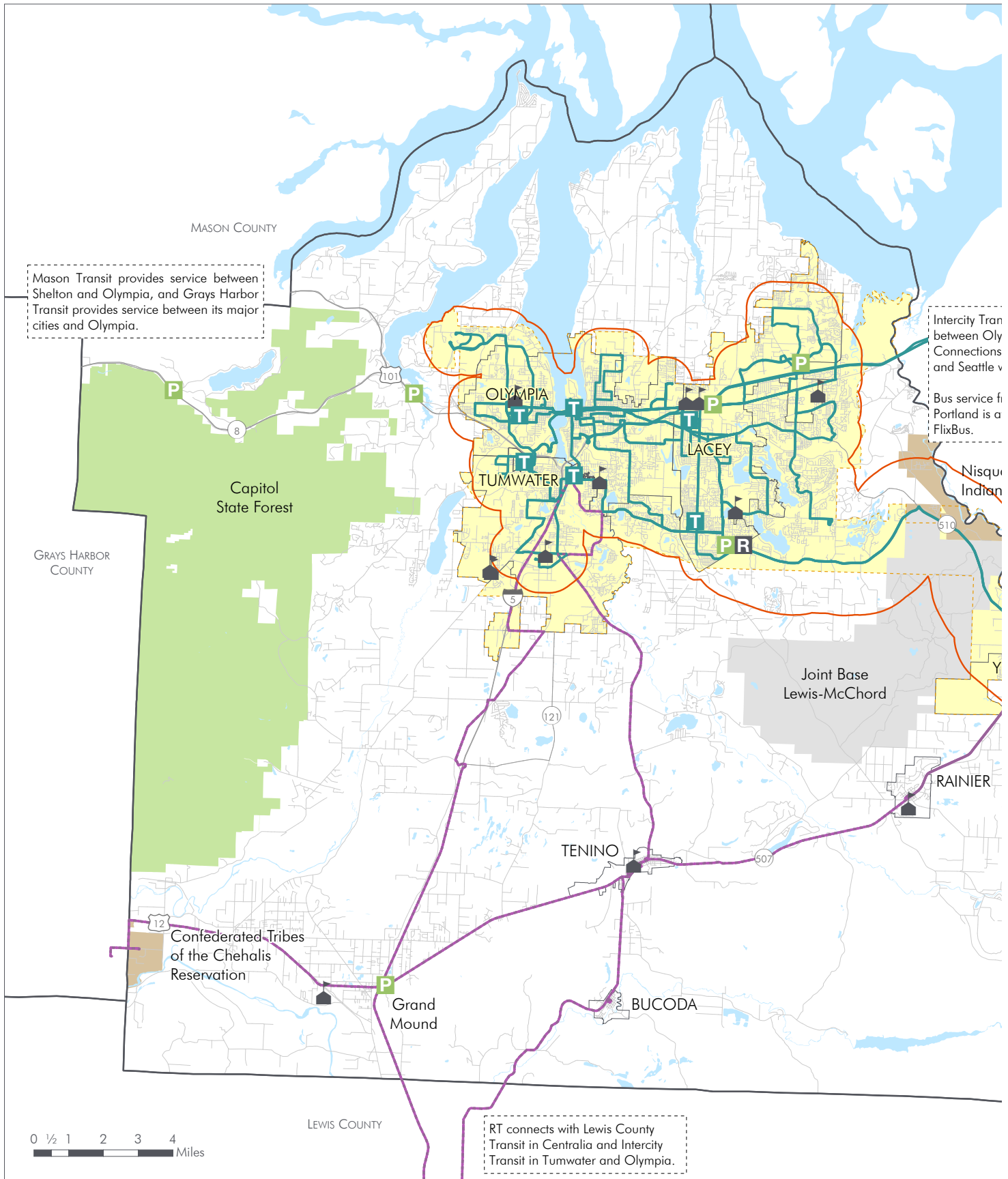
TRPC

What Moves You

Regional Transportation Plan

**DISCLAIMER:** This map is for general planning purposes only. Thurston Regional Planning Council makes no representations as to the accuracy or fitness of the information for a particular purpose.

Date: 3/12/2025



Document Path: P:\Transportation\RTP2050\RTP\_Maps.aprx

# Map B-3: Transit Service Area and Routes in Thurston County, WA

### Legend

- Intercity Transit (IT) Route
- ruralTRANSIT (RT) Route
- Public Transportation Benefit Area
- Dial-a-Lift Service Area

### Points of Interest

- T Transit Center
- R Rail Station
- P Park & Ride
- High School

Intercity Transit provides express service between Olympia/Lacey and Lakewood. Connections are available to Tacoma and Seattle with Sound Transit.

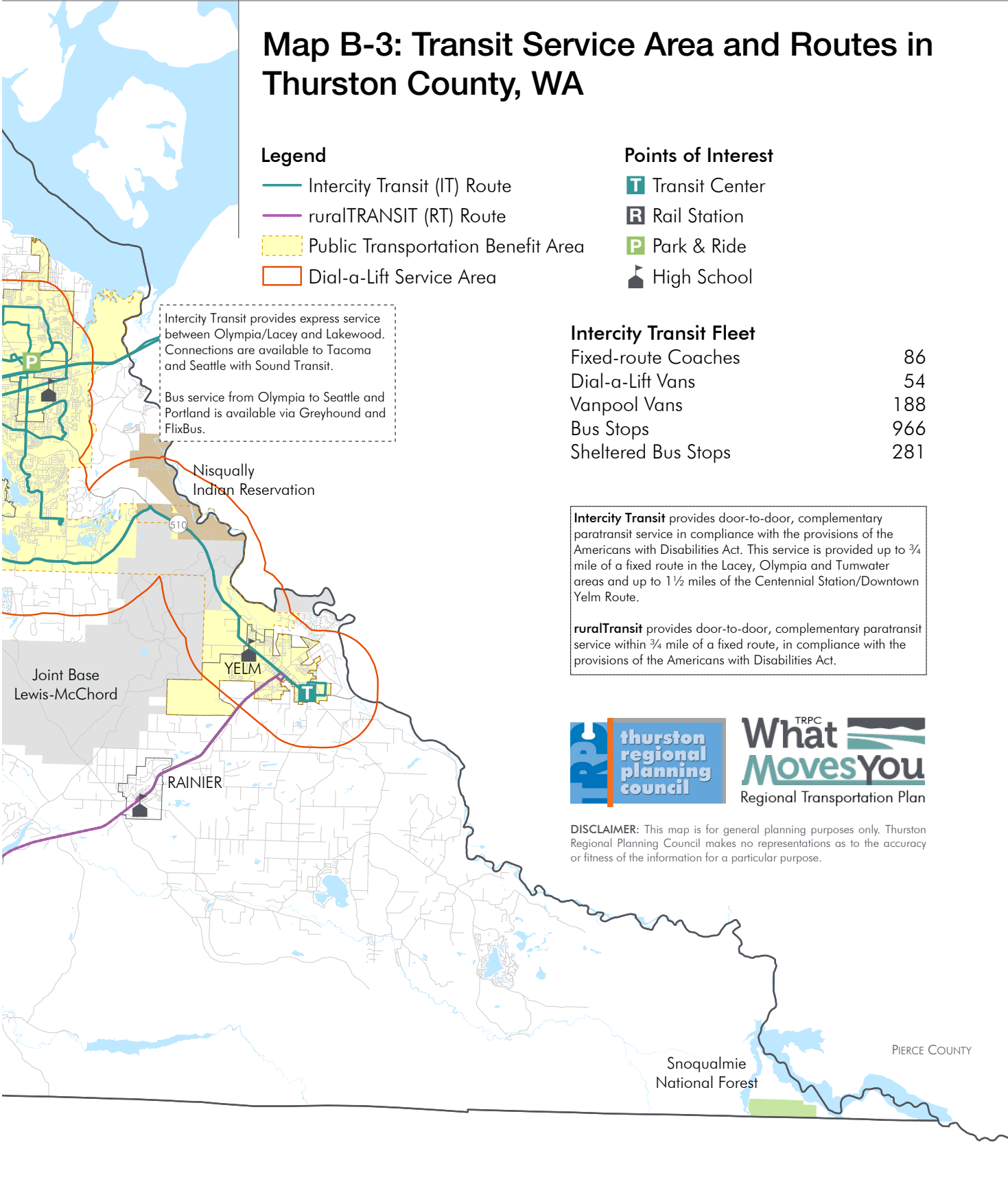
Bus service from Olympia to Seattle and Portland is available via Greyhound and FlixBus.

### Intercity Transit Fleet

Fixed-route Coaches	86
Dial-a-Lift Vans	54
Vanpool Vans	188
Bus Stops	966
Sheltered Bus Stops	281

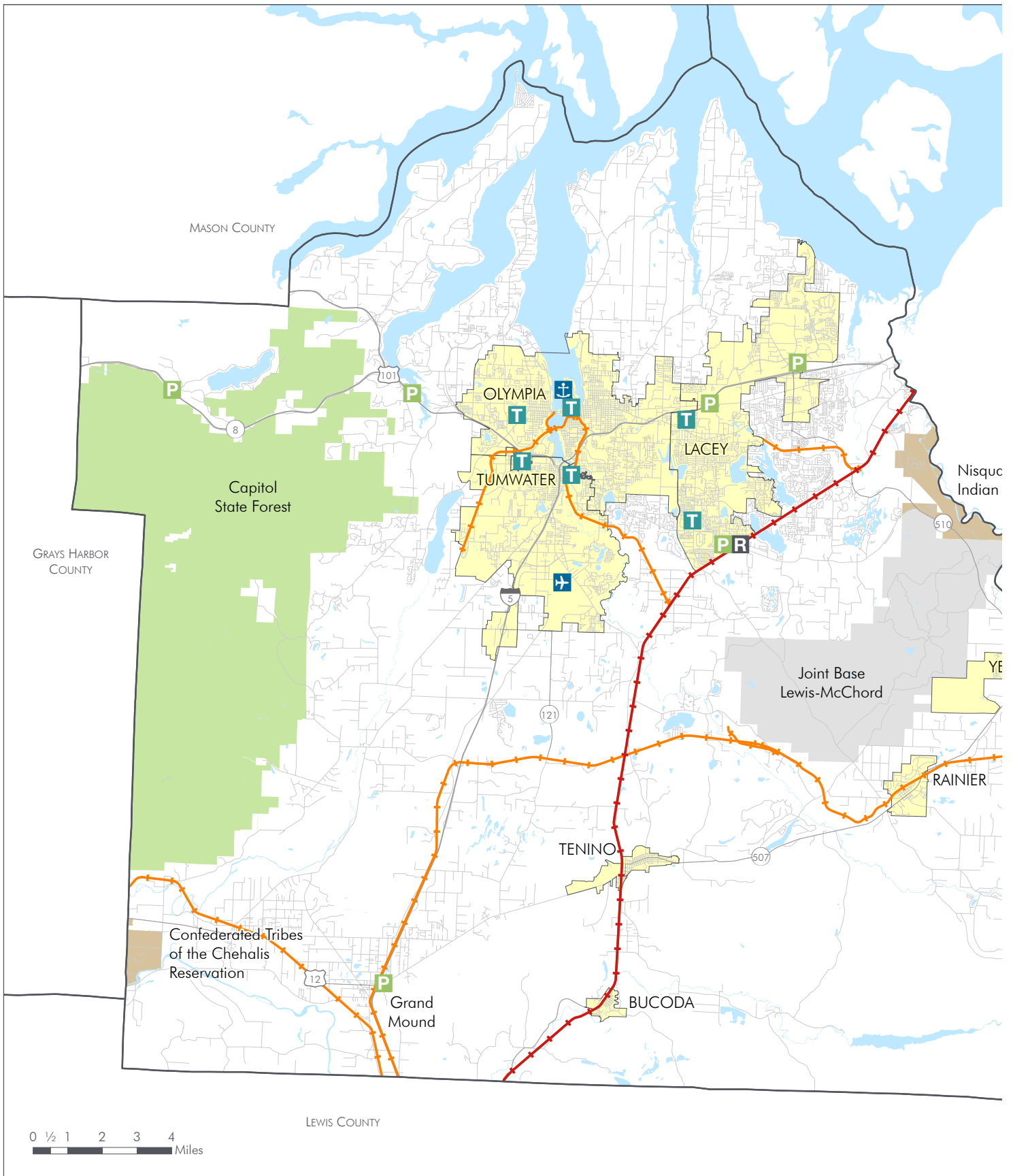
**Intercity Transit** provides door-to-door, complementary paratransit service in compliance with the provisions of the Americans with Disabilities Act. This service is provided up to ¾ mile of a fixed route in the Lacey, Olympia and Tumwater areas and up to 1½ miles of the Centennial Station/Downtown Yelm Route.

**ruralTransit** provides door-to-door, complementary paratransit service within ¾ mile of a fixed route, in compliance with the provisions of the Americans with Disabilities Act.



**DISCLAIMER:** This map is for general planning purposes only. Thurston Regional Planning Council makes no representations as to the accuracy or fitness of the information for a particular purpose.

Date: 3/12/2025



Document Path: P:\Transportation\RTP2050\RTP\_Maps.aprx

# Map B-4: Intermodal & Multimodal Travel Facilities in Thurston County, WA

### Transit

- R** Rail Station
- T** Transit Center

### Park & Ride

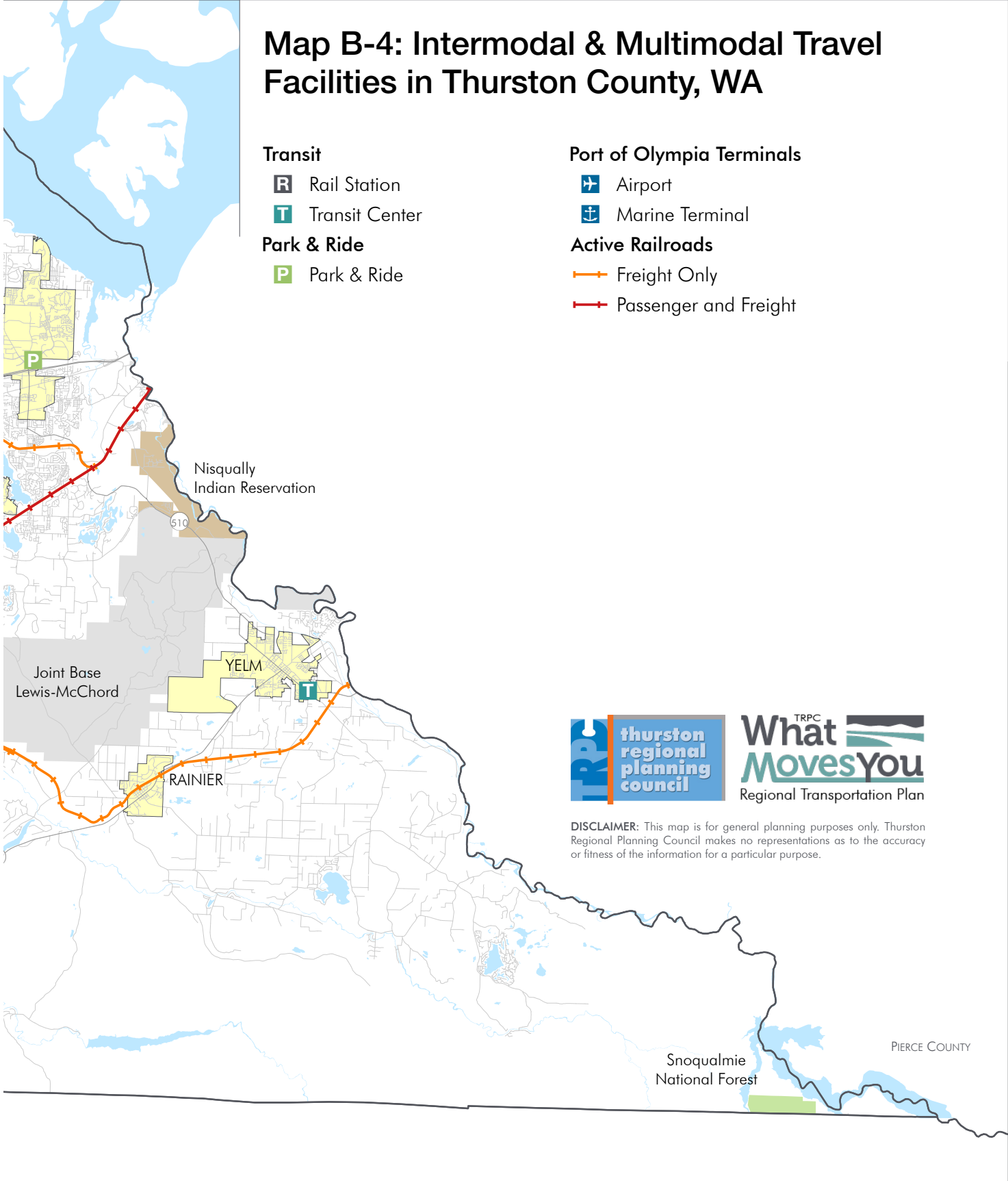
- P** Park & Ride

### Port of Olympia Terminals

- A** Airport
- M** Marine Terminal

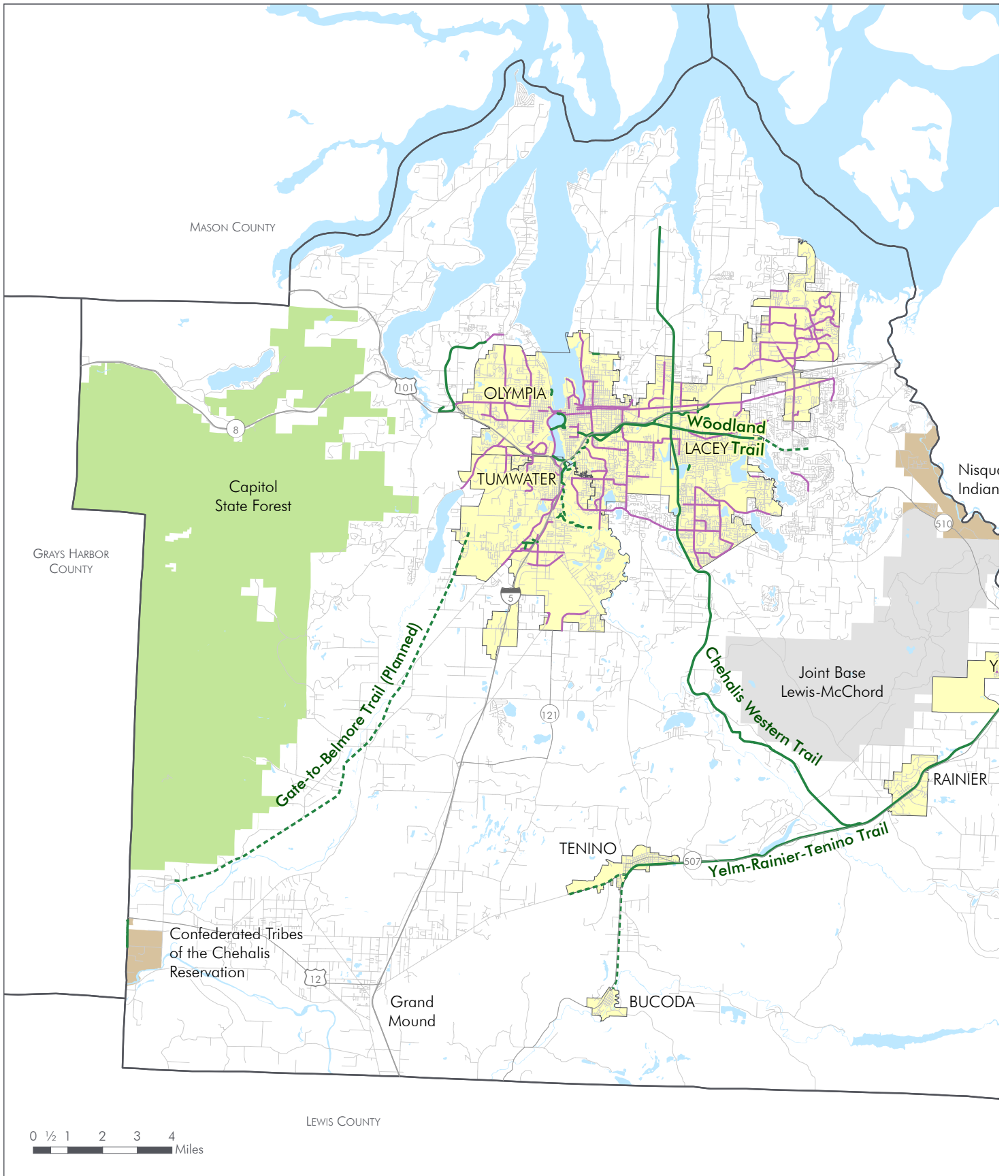
### Active Railroads

- Orange line with arrow** Freight Only
- Red line with arrow** Passenger and Freight



**DISCLAIMER:** This map is for general planning purposes only. Thurston Regional Planning Council makes no representations as to the accuracy or fitness of the information for a particular purpose.




Date: 3/12/2025





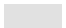
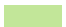
Document Path: P:\Transportation\RTP2050\RTP\_Maps.aprx

# Map B-5: On- and Off-Street Bicycle and Pedestrian Facilities in Thurston County, WA

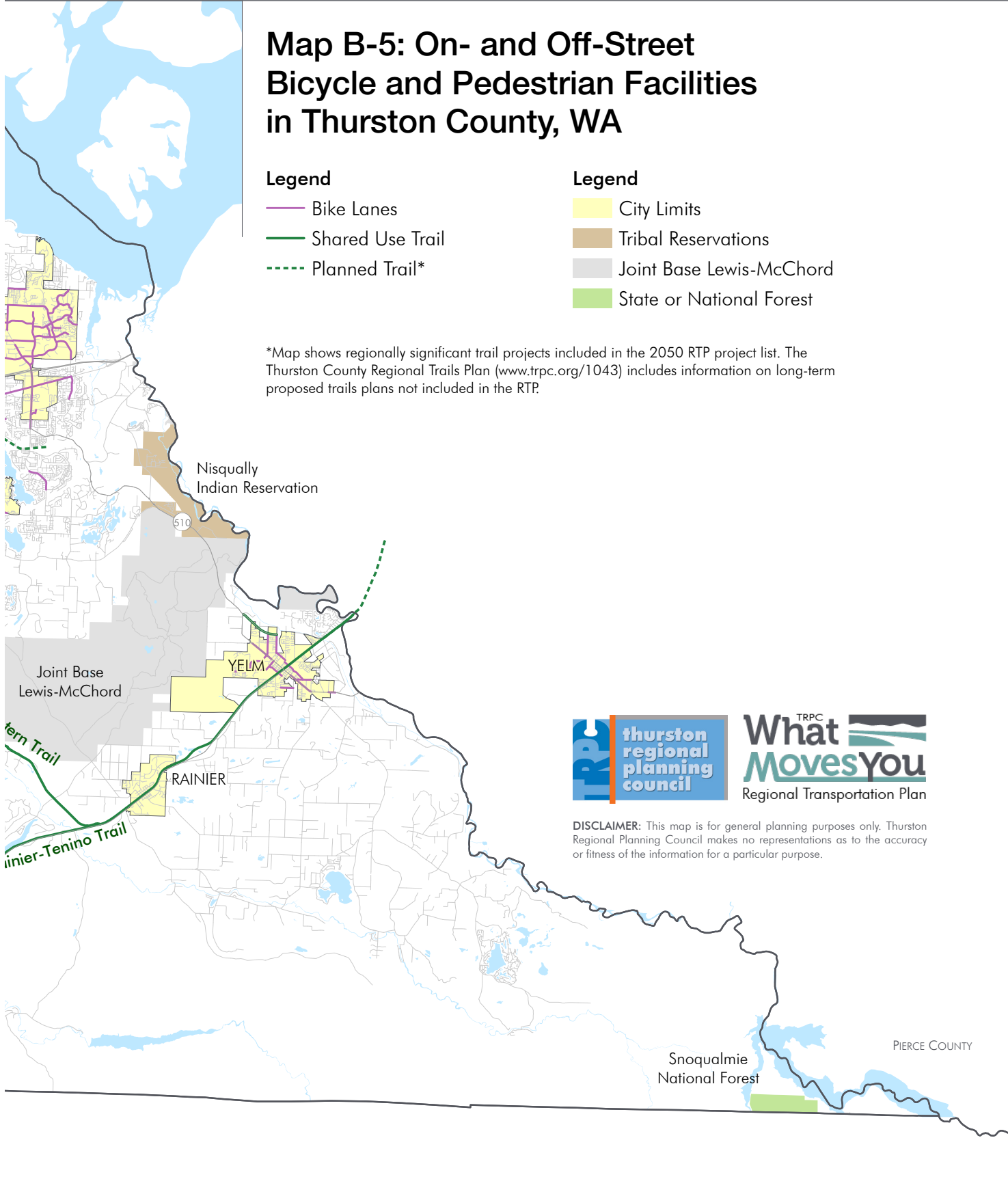
### Legend

-  Bike Lanes
-  Shared Use Trail
-  Planned Trail\*

### Legend

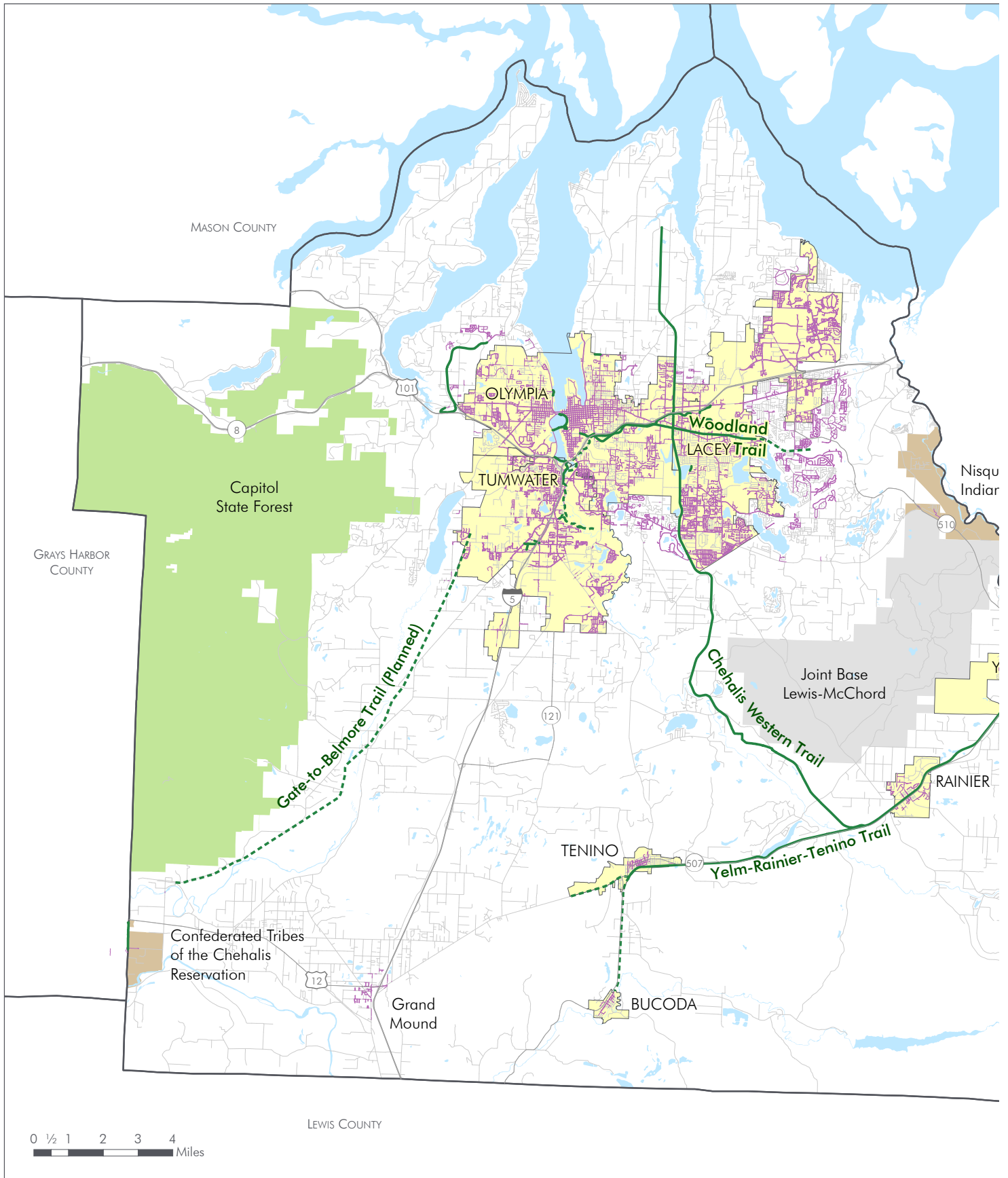
-  City Limits
-  Tribal Reservations
-  Joint Base Lewis-McChord
-  State or National Forest

\*Map shows regionally significant trail projects included in the 2050 RTP project list. The Thurston County Regional Trails Plan ([www.trpc.org/1043](http://www.trpc.org/1043)) includes information on long-term proposed trails plans not included in the RTP.



**DISCLAIMER:** This map is for general planning purposes only. Thurston Regional Planning Council makes no representations as to the accuracy or fitness of the information for a particular purpose.

Date: 3/12/2025



Document Path: P:\Transportation\RTP2050\RTP\_Maps.aprx

# Map B-6: Sidewalks in Thurston County, WA

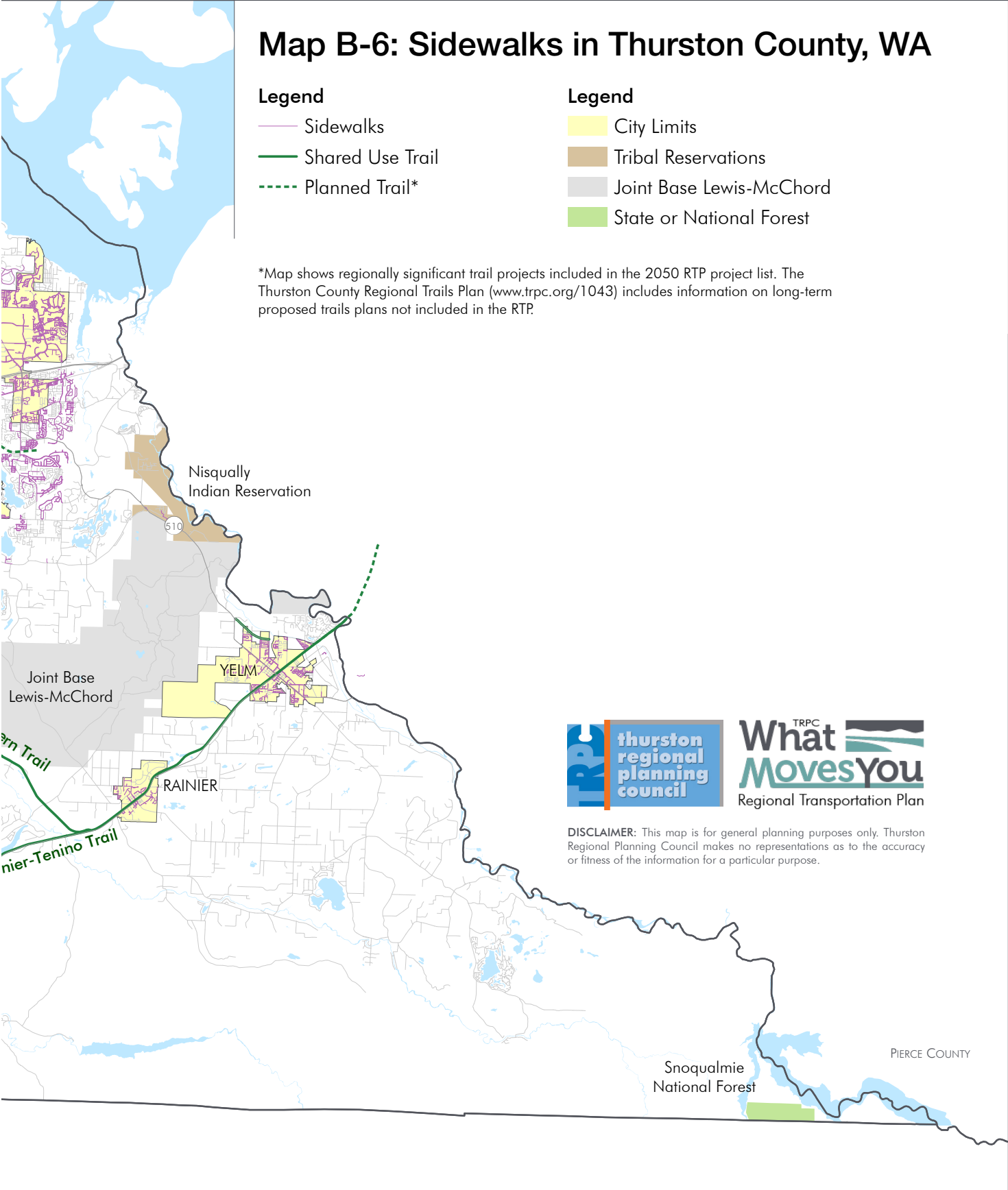
### Legend

- Sidewalks
- Shared Use Trail
- - - Planned Trail\*

### Legend

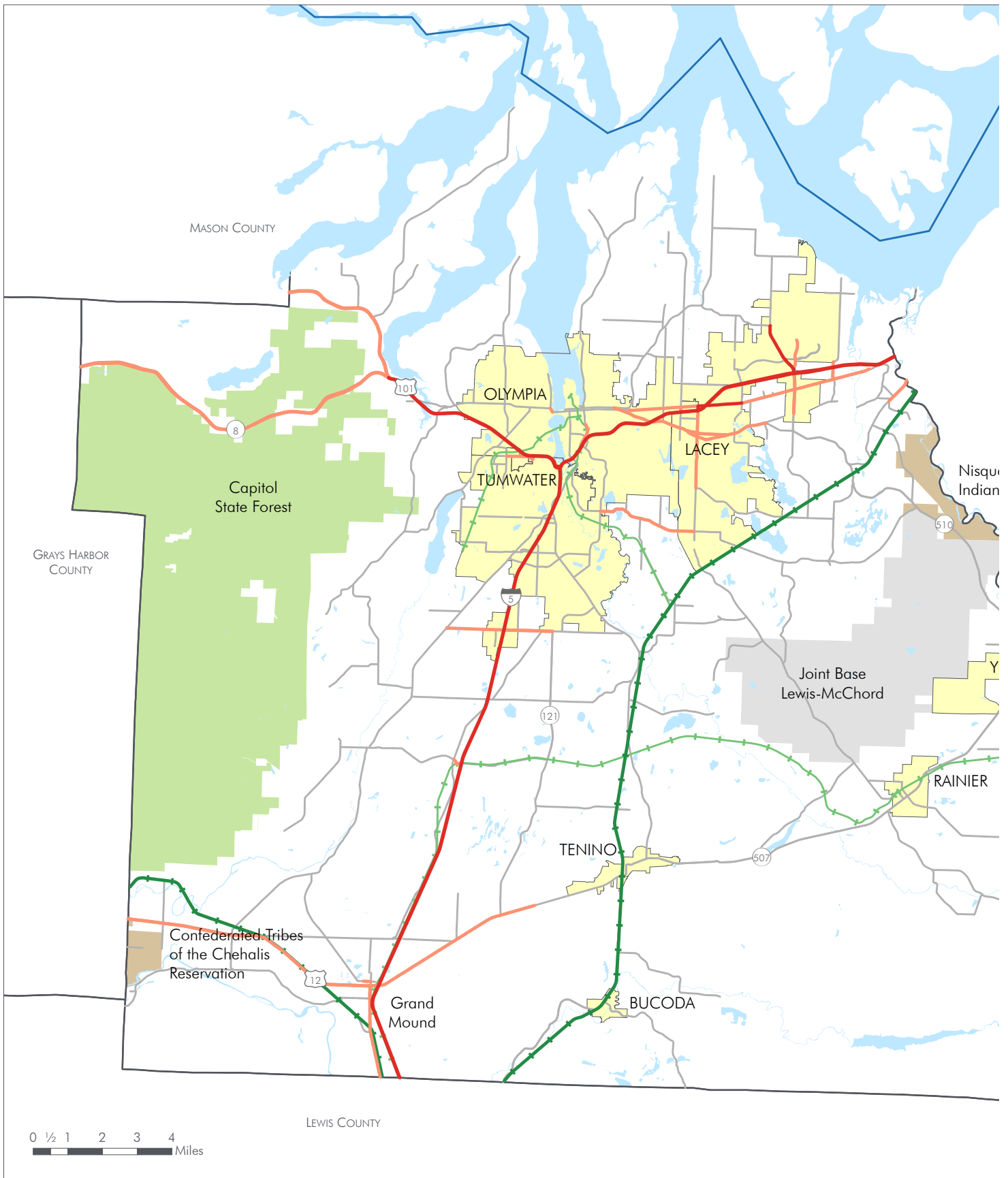
- City Limits
- Tribal Reservations
- Joint Base Lewis-McChord
- State or National Forest

\*Map shows regionally significant trail projects included in the 2050 RTP project list. The Thurston County Regional Trails Plan ([www.trpc.org/1043](http://www.trpc.org/1043)) includes information on long-term proposed trails plans not included in the RTP.



**DISCLAIMER:** This map is for general planning purposes only. Thurston Regional Planning Council makes no representations as to the accuracy or fitness of the information for a particular purpose.

Date: 3/12/2025



Document Path: P:\Transportation\RTP2050\RTP\_Maps.aprx

# Map B-7: Freight Corridors in Thurston County, WA

## 2023 WSDOT Freight Economic Corridors

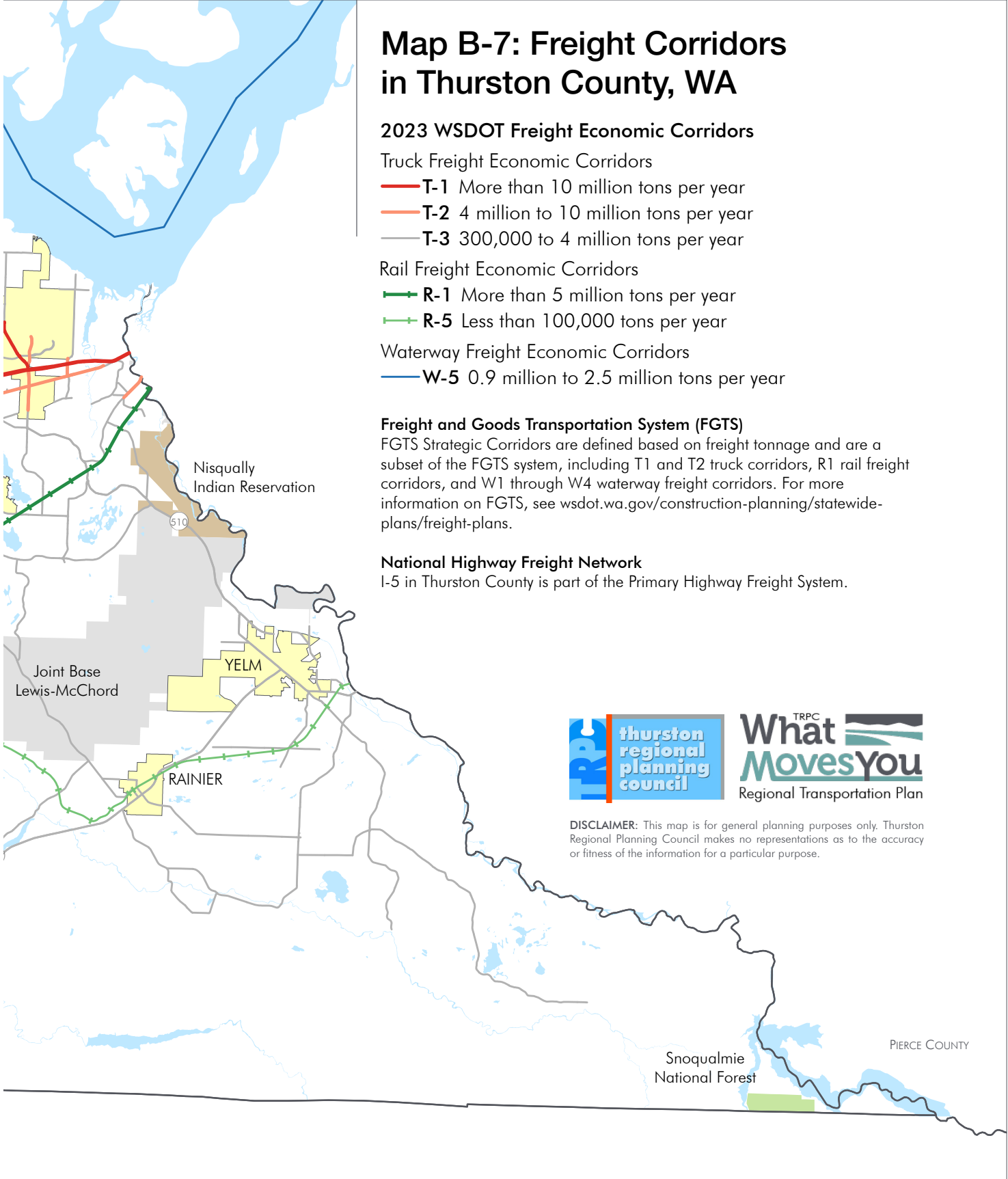
- Truck Freight Economic Corridors
- **T-1** More than 10 million tons per year
  - **T-2** 4 million to 10 million tons per year
  - **T-3** 300,000 to 4 million tons per year

- Rail Freight Economic Corridors
- **R-1** More than 5 million tons per year
  - **R-5** Less than 100,000 tons per year

- Waterway Freight Economic Corridors
- **W-5** 0.9 million to 2.5 million tons per year

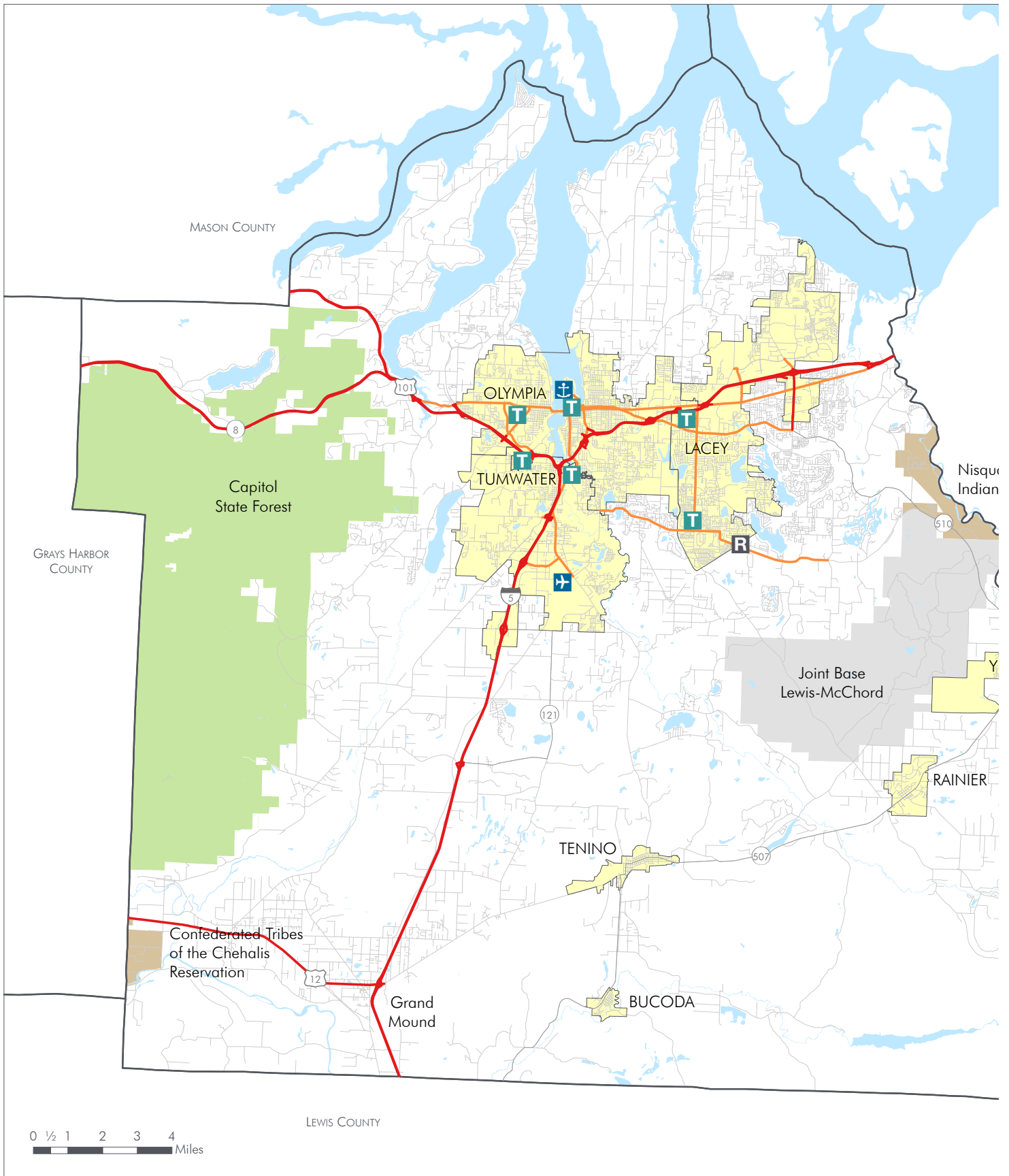
**Freight and Goods Transportation System (FGTS)**  
 FGTS Strategic Corridors are defined based on freight tonnage and are a subset of the FGTS system, including T1 and T2 truck corridors, R1 rail freight corridors, and W1 through W4 waterway freight corridors. For more information on FGTS, see [wsdot.wa.gov/construction-planning/statewide-plans/freight-plans](http://wsdot.wa.gov/construction-planning/statewide-plans/freight-plans).

**National Highway Freight Network**  
 I-5 in Thurston County is part of the Primary Highway Freight System.



**DISCLAIMER:** This map is for general planning purposes only. Thurston Regional Planning Council makes no representations as to the accuracy or fitness of the information for a particular purpose.





Date: 3/12/2025



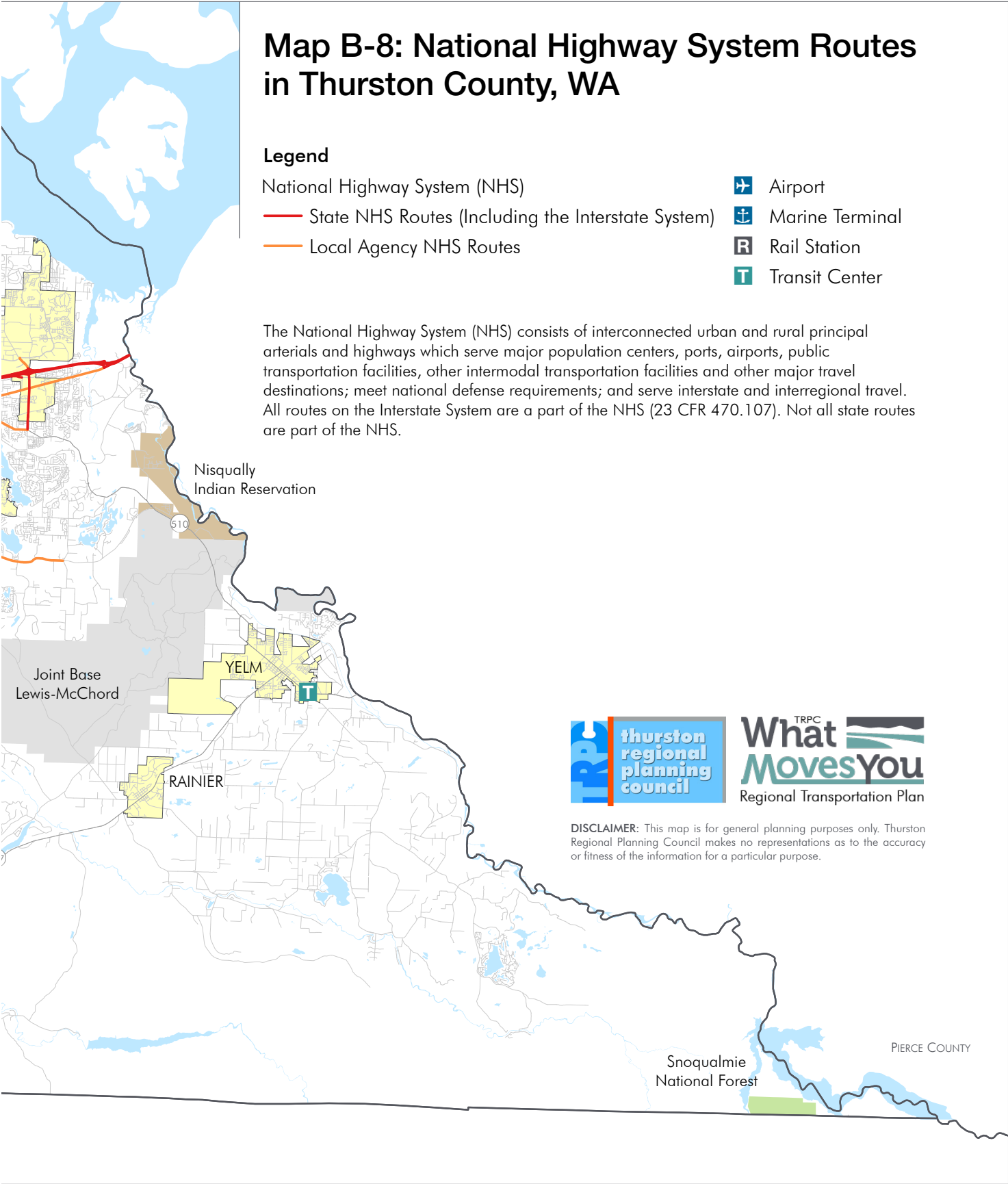
Document Path: P:\Transportation\RTP2050\RTP\_Maps.aprx

# Map B-8: National Highway System Routes in Thurston County, WA

### Legend

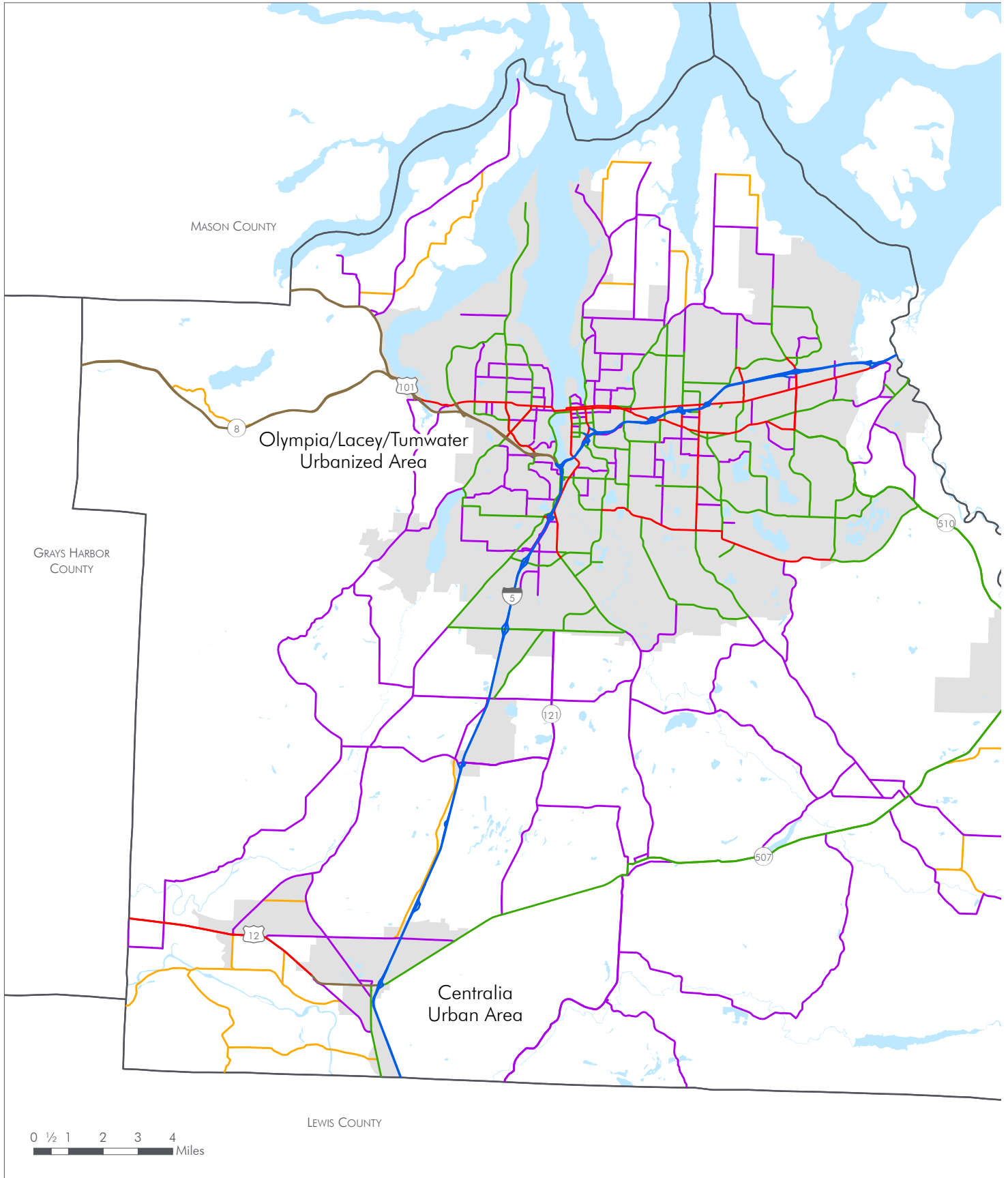
- National Highway System (NHS)
- State NHS Routes (Including the Interstate System)
- Local Agency NHS Routes
-  Airport
-  Marine Terminal
-  Rail Station
-  Transit Center

The National Highway System (NHS) consists of interconnected urban and rural principal arterials and highways which serve major population centers, ports, airports, public transportation facilities, other intermodal transportation facilities and other major travel destinations; meet national defense requirements; and serve interstate and interregional travel. All routes on the Interstate System are a part of the NHS (23 CFR 470.107). Not all state routes are part of the NHS.



**DISCLAIMER:** This map is for general planning purposes only. Thurston Regional Planning Council makes no representations as to the accuracy or fitness of the information for a particular purpose.

Date: 3/12/2025



Document Path: P:\Transportation\RTP2050\RTP\_Maps.aprx

# Map B-9: Federal Functional Classification for Routes in Thurston County, WA

### Legend

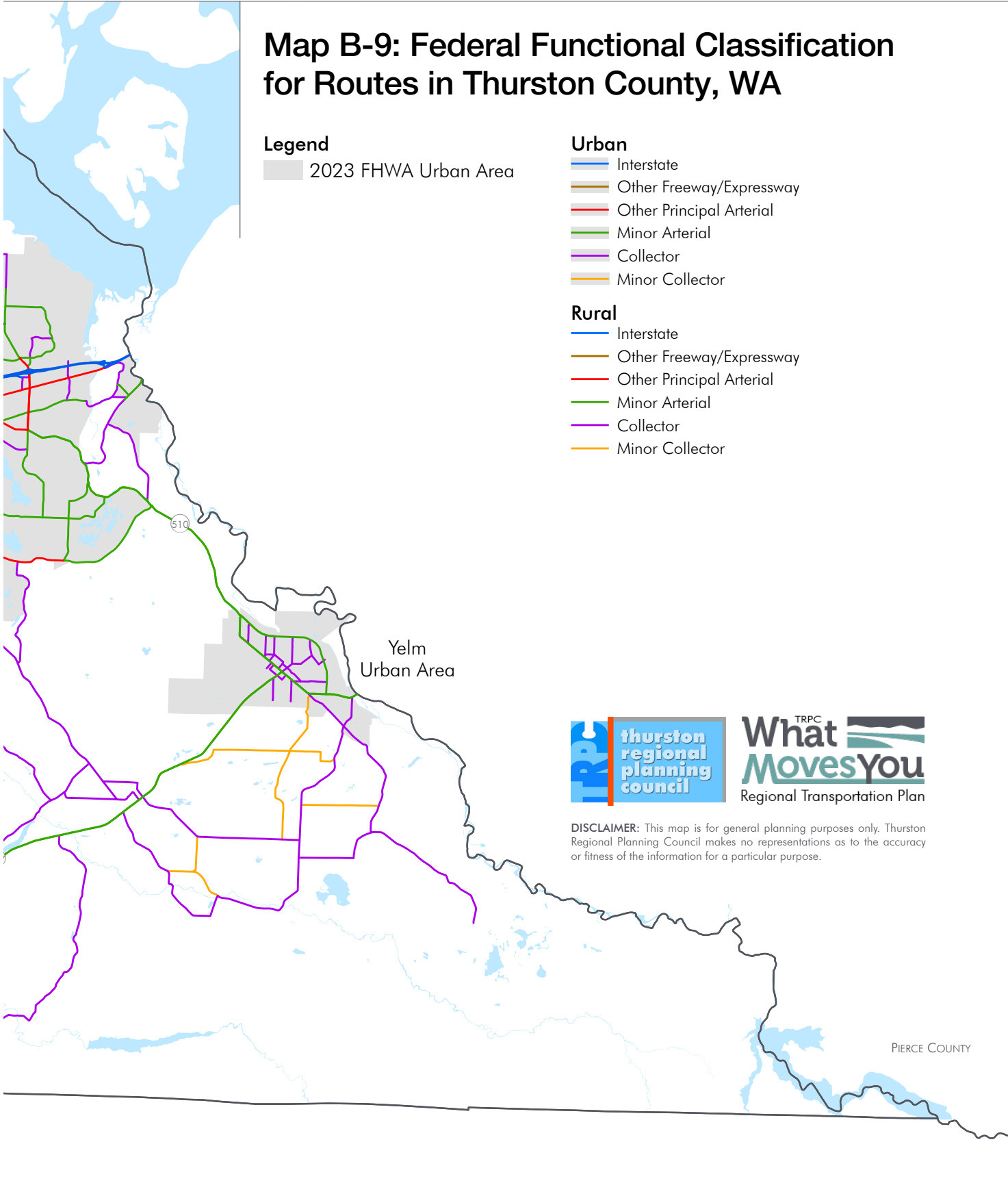
2023 FHWA Urban Area

### Urban

- Interstate
- Other Freeway/Expressway
- Other Principal Arterial
- Minor Arterial
- Collector
- Minor Collector

### Rural

- Interstate
- Other Freeway/Expressway
- Other Principal Arterial
- Minor Arterial
- Collector
- Minor Collector



**DISCLAIMER:** This map is for general planning purposes only. Thurston Regional Planning Council makes no representations as to the accuracy or fitness of the information for a particular purpose.

Date: 3/12/2025

This page left intentionally blank.