

EQUITY

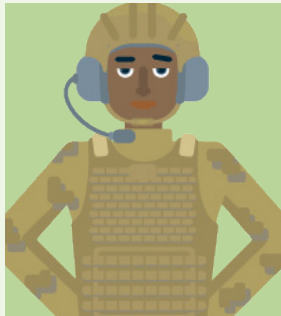
The burdens and benefits of transportation decisions and investments should be equally shared.



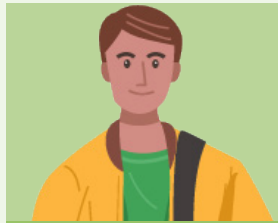
MEET YOUR THURSTON COUNTY NEIGHBORS



5,800 households have no access to a car



6,100 are active-duty military personnel



2,200 are unhoused or unsheltered, including 1,300 students



29,300 are veterans



43,800 live with a disability



37,800 households are cost-burdened — the cost of housing and transportation exceeds 30% of their income AND they earn less than 80% of the county's median family income.



28,300 live in poverty — for a one-person household, that's an income of just \$15,489 in 2023



86,800 are people of color



34,500 speak a language other than English at home; 12,100 speak English less than "very well"

