

2019 Statistical Profile: City of Tenino

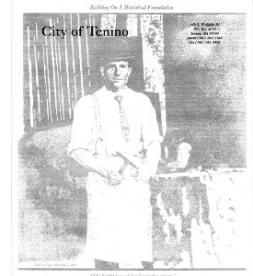
City info: (360) 264-2368

www.ci.tenino.wa.us

Demographics

Population, 2000	1,447	
Population, 2010	1,695	
Population, 2019	1,840	
Pop. Growth per Year, 2000-'10	1.6%	
Pop. Growth per Year, 2010-'19	1.2%	
Households, 2010	691	
Average Household Size, 2010	2.43	
Age Structure, 2010:		
17 and under	430	25%
18 - 64	1,044	62%
65 and over	221	13%
Median Age	37	--
Race and Ethnic Categories, 2010:		
White	1,538	91%
Black/African American	3	0%
American Indian & Alaska Native	15	1%
Asian	21	1%
Native Hawaiian & Other Pacific Islander	5	0%
Other Race	35	2%
Two or More Races	78	5%
Hispanic or Latino (Of Any Race), 2010:		
	125	7%

In 1851, Stephen Hodgdon, a Maine native, settled on a site on the old Oregon Trail where it forked north toward Tumwater and east to Yelm Prairie and Fort Nisqually. His farm soon became known as Hodgdon's Station and was a regular stagecoach stop between the Columbia River and Olympia.



In 1872, the railroad reached Hodgdon's farm and a depot was built and named "Tenino," which comes from a Coastal Salish word meaning "a branch in the trail" or "meeting place." The railroad and the opening of the sandstone quarries, beginning in 1888, turned Tenino into a bustling town of 1,000 by the early 1900s. The sandstone industry began to decline in 1912, but its influence is still evident in the community.

Housing

Housing Units, 2019 Estimate:		
Single-Family	540	69%
Multifamily	125	16%
Manufactured Homes	115	15%
Average Home Sale Price, 2018:	\$307,728	

Employment and Income

Median Household Income (in 2017 \$\$\$)¹:		
2008-2012 (ACS Estimate)	\$47,561	
2013-2017 (ACS Estimate)	\$51,250	
Households by Income Category, 2013-2017¹:		
Less than \$24,999	158	25%
\$25,000 to \$49,999	158	25%
\$50,000 to \$74,999	140	22%
\$75,000 to \$99,999	82	13%
\$100,000 or more	98	15%

Taxable Retail Sales, 2018: \$28,507,540

Total Jobs, 2014 Estimate²:	870
Resource, Construction, Utilities	30
Manufacturing, Wholesale Trade	25
Retail, Accomodation, Food	170
Transportation, Warehousing	70
Services	310
Finance, Insurance, Real Estate	60
Government	215

Development Activity

New Housing Units Permitted		
Average per Year, 2000-'10	10	
Average per Year, 2011-'17	6.8	
Total New Units Permitted, 2018	6	

Subdivision Activity, 2018:	# Appl.	# Lots
Short Plat	1	3
Long Plat	0	0